

Product Catalogue



**“We take pride in providing innovative solutions to the evolving industry. Our technical knowledge with in-house engineering and manufacturing departments allows us to provide customized solutions and support to our clients.”**

Kazu Toyama

*President of Suncall America*

# Table of Contents

Suncall Corporation.....	2
--------------------------	---

## ■ LC Series

LC Simplex Connector .....	7
LC Duplex Connector .....	8
LC Uniboot Connector v4.....	9
LC Push-Pull Uniboot Connector v4.....	10
LC Uniboot Connector v5.....	11
LC Push-Pull Uniboot Connector v5.....	12
LC Pull Uniboot Connector.....	13
LC Bendi Boot Connector.....	14
LC Internal Shutter Slimpack Adapters .....	15
LC Internal Shutter Slimpack Adapters - Clusters.....	16
LC Internal Shutter Regular Adapters.....	17
LC Internal Shutter Regular Adapters - Clusters.....	18
LC Simplex & Duplex Standard Adapters.....	19
LC Slimpack Duplex Adapters.....	20
LC Slimpack Quad Adapters.....	21
LC External Shutter Adapters .....	22

## ■ MPO Series

MPO Connector .....	23
MPO 12F Pull Boot Connector .....	24
MPO 16F Pull Boot Connector .....	25
MPO 12F Internal Shutter Adapters.....	26
MPO 12F Internal Shutter Cluster Adapters.....	27
MPO 16F Internal Shutter Adapters.....	28
MPO 16F Internal Shutter Cluster Adapters.....	29
MPO Multifunction Connector and Exchanger Tool .....	30
MPO Simplex Adapters .....	31

## ■ SC Series

SC Simplex Connector.....	32
SC Duplex Connector.....	33
SC Uniboot Connector.....	34
SC Bendi Boot Connector .....	35
SC Simplex Internal Shutter Adapter .....	36
SC Simplex Adapter .....	37
SC Duplex Adapter .....	38

## ■ MU Series

MU Simplex Connector.....	39
MU Duplex Connector.....	40
MU Simplex and Duplex Adapters.....	41
MU Slimpack Duplex Adapters .....	42

## ■ FC Series

FC Simplex Connector.....	43
FC Simplex Adapter .....	44

## ■ ST Series

ST Simplex Connector .....	45
ST Simplex Adapter.....	46

## ■ Tools

CleanClicker™ 600 .....	48
CleanClicker™ 750 - 1.25mm.....	49
CleanClicker™ 750 - 2.5mm.....	50
CleanClicker™ Cassette Cleaners.....	51
Crimping Tool.....	52

PARENT COMPANY

# Suncall Corporation

## Message from Suncall CEO



Tadashi Nara, President &  
C.E.O. of Suncall Corporation

Since our establishment in 1943, we have followed a business model as “an integrated manufacturer, from raw materials to processed goods”, unrivaled in our goal of creating technology-intensive precision products. With our core precision plasticity forming technology serving as a base, we have steadily expanded our scope from automotive parts to electronic, information, and optical communication components, which we will continue to hold as important pillars of our business.

Furthermore, we will continue to create and improve, soaring to even greater heights.

For existing automotive parts, we are aiming to go deeper and make further improvements to efficiency and other areas. As the development of electric vehicles continues, we will enter the electric vehicle market and develop a new field

for us of electrical and electronic parts, such as bus bars and current sensors. For the optical communications market that will keep on expanding greatly, we will develop products that meet the needs of customers, including products that have high density, low loss, high-frequency resistance, multi-core and other properties.

As for the direction of our future business development, we plan to concentrate on the development of electric vehicles, the environment and energy, and medical care and nursing care.

For the development of electric vehicles, we will continue to develop the electrical and electronic parts needed in electric vehicles, and expand their variation. For the environment and energy, we will continue with our environmentally conscious approach to development and make products using charcoal and elements extracted from bamboo sourced from abandoned bamboo forests. For medical care and nursing care, we are currently establishing results for the robots we have jointly developed with universities and hospitals at hospitals, nursing care facilities, and other medical institutions.

These are some of the ways that we are constantly challenging ourselves, and seeing how we can adopt our original technologies to new and unknown areas. By combining the technologies we have built-up in various fields, we will proudly offer world-class, Suncall quality products and contribute to society.



## Suncall Corporation

Established	June 1943
Headquarters	Kyoto, Japan
# of Employees	2,172
Capital	≈US\$ 44 Million*
Sales	JPY 47.4 Billion*
Stock Listing	Tokyo Stock Exchange - Standard Market
Website	<a href="http://suncall.co.jp">suncall.co.jp</a>

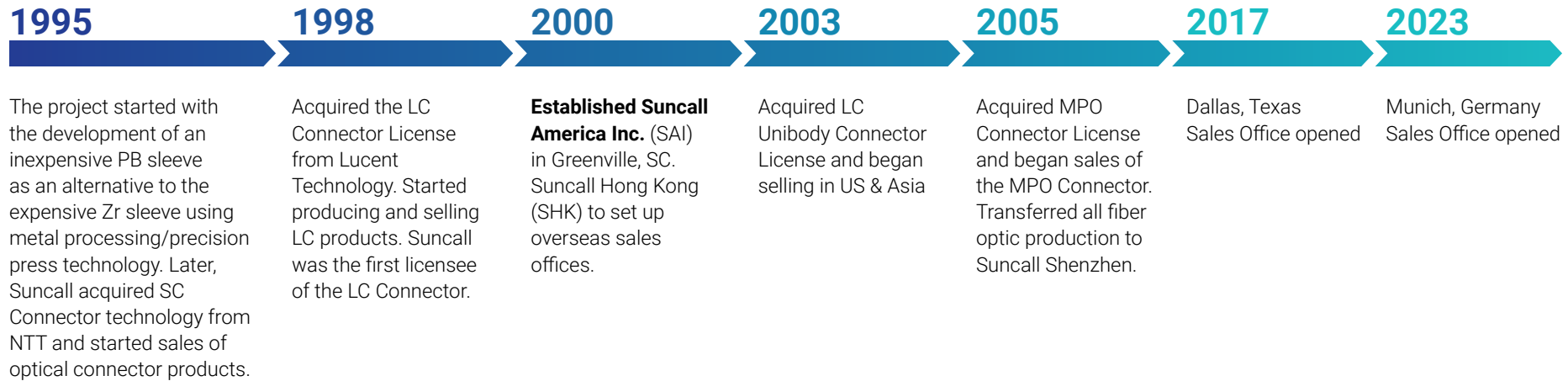
## Company Philosophy

技 翔 創 変

Technology Progress Creativity Change

\* From 2022

# History of Suncall's Fiber Optical Products



## SUNCALL AMERICA World-Wide Locations

### **Suncall America Inc. Fiber Optics Division (Dallas)**

2812 Trinity Square Drive, Suite 110  
Carrollton, TX 75006, USA  
Phone 469-445-1131  
Fax: 469-445-1132

### **Suncall America Inc. Fiber Optics Division (Greenville)**

150 W Phillips Rd, Suite C  
Greer, SC 29650, USA  
Phone: 864-329-1130  
Fax: 864-329-1131

### **Suncall Corporation – Headquarters**

14, Umezu Nishiura-cho, Ukyo-ku  
Kyoto-shi, Kyoto-fu 615-8555, JAPAN  
Phone: +81(75)881-8111  
Fax: +81(75)881-4445

### **Suncall Technologies (SZ) Co., LTD**

Building 4  
Hongbang Technology Park  
No.30, Cuibao Road  
Longgang District,  
Shenzhen CHINA  
Phone: +86(755)2870-6720  
Fax: +86(755)2870-0795

### **Suncall Europe Technology & Trading GmbH**

Leopoldstrasse 244  
80807 Munich Germany  
Phone: +49(0)89 208039 350  
Mobile: +49(0)172 9162531

# A Company Founded On Function & Precision

Suncall America Inc., a fiber optics division of Suncall Corporation, is an industry-leading provider of customized network connectors, adapters, and accessories. With more than two decades of experience in the fiber optics industry, Suncall offers a strong R&D division along with outstanding customer service and support. We work in collaboration with customers to design, develop, and manufacture advanced connectors, adapters, and accessories for the datacenter application, wireless communication, and telecom communication fields.



*Suncall factory in Shenzhen, China*



## Sales - Research & Development

Our R&D Team works directly with the sales teams and the customer to design, develop and manufacture innovative fiber optic solutions built to exacting specifications. We have 14 molding machines and approximately 170 different injection molding tools all maintained in-house.



## Production

Our Production lines have both manual and autonomous equipment to create any type of SC, LC, MPO connector and adapter that our customers may need.



## Quality Control

We commit to our customers satisfaction with high quality products with on time delivery but at the same time we have many QC checkpoints and machines that make sure the customer is getting the best product with the highest quality from us.



**PRODUCTS**

# LC Simplex Connectors

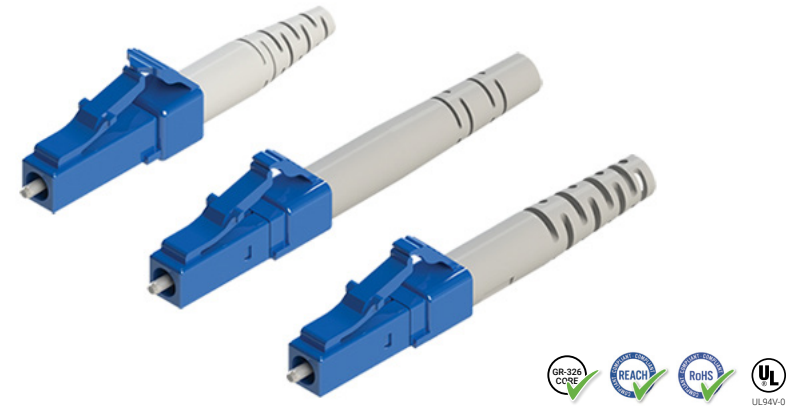
Our LC Simplex Connectors offer a simple, compact SFF design for ultimate space efficiency. Accommodating 0.9mm, 2.0mm, and 3.0mm boot connectors, LC Simplex Connectors are ideal for both single and multi-mode applications with the versatility of high-density packaging. Available in a standard two-piece design, or unibody option for added durability.

## Features:

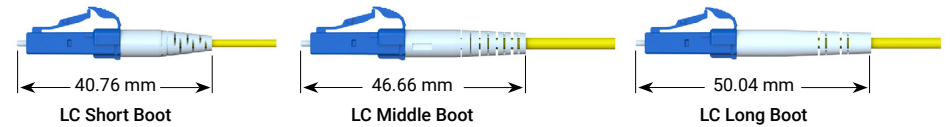
- Two body type options: 2-piece or Unibody
- Three boot lengths: short, middle, long
- Available in a variety of colors:

## Specs:

- Fiber Type: SM (9/125), MM (50/125, 62.5/125)
- Application Mode: SM, MM, APC
- Insertion Loss: 0.3dB or lower
- Return Loss: 55dB or more UPC, 65dB or more APC
- IEC-61754-20, IEC-61755-3-2 and TIA-604-10A-2002 Standard-Type LC



Boot Comparison Chart



## LC Simplex Connectors - Product Number Table

Body Type	Mode	Product Type	Cable Spec	Housing Color	Ferrule Type & ID	Concentricity	Boot Type	Boot Color	Dust Cap Type	Shrink Tube Type											
LC	2-Piece Body	SS	SM Simplex	P	Pre Assy	09	Φ 0.9mm Cable	AQ	Aqua	F50	Flat 125.0um	05	0.5um	BA	Buffer Adapter Boot (0.9mm)	AQ	Aqua	S	Square Dust Cap	N	No tube (0.9 / 3.0mm)
LU	Unibody	MS	MM Simplex	P	Pre Assy	12	Φ 1.2mm Cable	BG	Beige	F55	Flat 125.5um	10	1.0um (Standard)	LB	Long Boot (1.2/2.0/3.0mm)	BG	Beige	S	Square Dust Cap	Y	Yellow (1.2 / 2.0mm)
			APC Simplex			AS	20	Φ 2.0mm Cable	BL	Blue	F60	Flat 126.0um	40	4.0um	MB	Middle Boot (1.2/2.0/3.0mm)	BL			Blue	W
		GR	Green			HV	Heather Violet	30	Φ 3.0mm Cable	SB	Short Boot (all cable specs)	GR	Green								




For the interactive product number table, [click here](#) or scan QRC



# LC Uniboot Connector v4

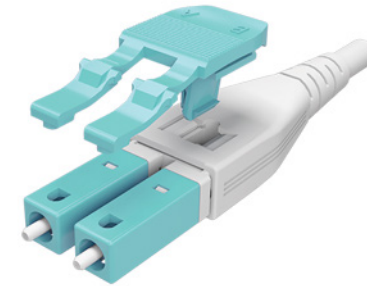
Designed with a simple polarity reversible function, the LC Uniboot Connector is manufactured to provide a stronger, more stress-resistant retention force between connector and cable. Used for single, multi-mode and APC applications, the practical design of the LC Uniboot Connector makes it easy to engage and disengage from even the most compact panels.

## Features:

- Strong retention force connector
- Easy Click & Flip polarity change, no jig required
- Available in a variety of colors: 

## Specs:

- Fiber Type: SM (9/125), MM (50/125, 62.5/125)
- Application Mode: SM, MM, APC
- Insertion Loss: 0.3dB or lower
- Return Loss: 55dB or more UPC, 65dB or more APC
- IEC-61754-20, IEC-61755-3-2 and TIA-604-10A-2002 Standard-Type LC



LC Uniboot Connectors v4 - Product Number Table

Body Type		Mode		Product Type		Cable Spec		Housing Color		Ferrule Type & ID		Concentricity		Boot Color		Dust Cap Type		Shrink Tube Type		
LC	LC Connector	SNH6	Single Mode	P	Pre Assy	16	Φ 1.6mm Cable	AQ	Aqua	F50	125.0um	05	0.5um	GR	Green	S	Square Dust Cap	W	White (1.6/2.0mm)	
		MNH6	Multi Mode			20	Φ 2.0mm Cable	BG	Beige	F55	125.5um (SM Standard)	10	1.0um (Standard)	WH	White (Standard)			TW	Thin White (3.0mm)	
		ANH6	APC			30	Φ 3.0mm Cable	BL	Blue	F60	126.0um	40	4.0um							
						GR	Green													
										HV	Heather Violet									
										LG	Lime Green									



For the interactive product number table, [click here](#) or scan QRC

# LC Push-Pull Uniboot Connector v4

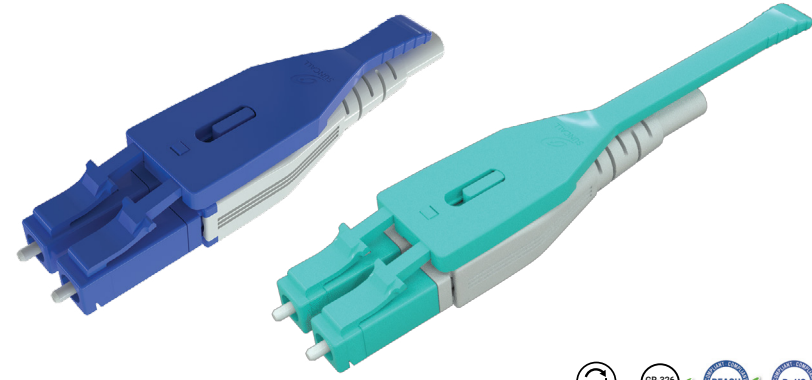
Our improved design with a precision grip tab allows for easy extraction and insertion with HD panels. As an added benefit, we now offer this connector in a short pull tab design. Both styles have the simple Click & Flip polarity change (no jig required) which allows for fast changes in the field without fiber exposure.

## Features:

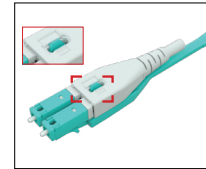
- Precision grip for easy extraction and insertion
- Click & Flip polarity change, no jig required
- Available in a variety of colors:

## Specs:

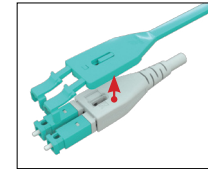
- Fiber Type: SM (9/125), MM (50/125, 62.5/125)
- Application Mode: SM, MM, APC
- Insertion Loss: 0.3dB or lower
- Return Loss: 55dB or more UPC, 65dB or more APC
- IEC-61754-20, IEC-61755-3-1 and TIA-604-10A-2002 Standard-Type LC



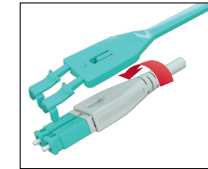
## Click & Flip Polarity Change Process



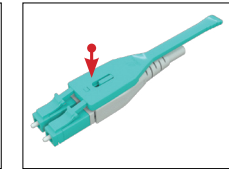
**Step 1:** CLICK to unlock bottom latch with finger



**Step 2:** Extract the latch from Uniboot



**Step 3:** FLIP the connector body 180°



**Step 4:** Push the latch back in until CLICK locks it in

## LC Push-Pull Uniboot Connectors v4 - Product Number Table

Body Type		Mode		Boot Type		Product Type		Cable Spec		Housing Color		Ferrule Type & ID		Concentricity		Boot Color		Pull-Tab Color		Dust Cap Type		Shrink Tube Type			
LC	LC Connector	S	Single Mode	4P	V4 Long Push Pull	P	Pre Assy	16	Φ 1.6mm Cable (only 4PS, short tab)	AQ	Aqua	F50	125.0um	05	0.5um	WH	White	AQ	Aqua	S	Square Dust Cap	W	White (2.0mm Cable)		
								20	Φ 2.0mm Cable	BG	Beige	F55	125.5um (SM Standard)	10	1.0um (Standard)	BG	Beige			TW	Thin White (3.0mm Cable)				
								30	Φ 3.0mm Cable (only 4P, long tab)	BL	Blue	F60	126.0um	40	4.0um	BL	Blue								
											GR	Green													
												HV	Heather Violet												
												LG	Lime Green												




For the interactive product number table, [click here](#) or scan QRC

# LC Uniboot Connector v5

Built for FTTH, the durable construction of the LC Uniboot Connector v5 has a strong retention force with a metal-to-metal crimp design. It also offers an easy Click & Flip polarity change, making it a top choice for field use.

## Features:

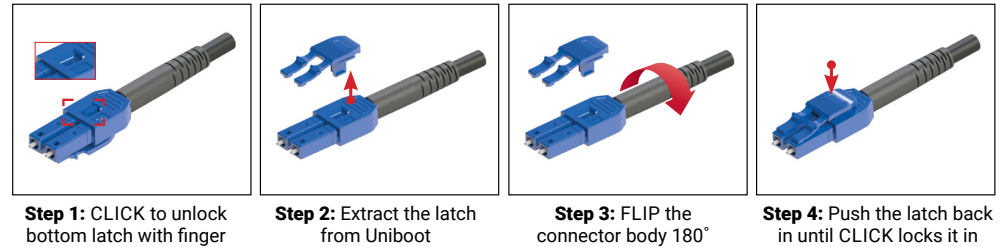
- Designed for stronger cable retention forces needed in FTTH applications
- Click & Flip polarity change requires no jig/tools
- Eliminates fiber exposure during polarity change process
- Available in a variety of colors: 

## Specs:

- Fiber Type: SM (9/125), MM (50/125, 62.5/125)
- Application Mode: SM, MM, APC
- Insertion Loss: 0.3dB or lower
- Return Loss: 55dB or more UPC, 65dB or more APC
- IEC-61754-20, IEC-61755-3-1 and TIA-604-10A-2002 Standard-Type LC



## Click & Flip Polarity Change Process



## LC Uniboot Connectors v5 - Product Number Table

Body Type		Mode		Boot Type		Product Type		Cable Spec		Housing Color		Ferrule Type & ID		Concentricity		Boot Color		Dust Cap Type		Shrink Tube Type	
LC	LC Connector	S	Single Mode	5L	Long Boot	P	Pre Assy	20	Φ 2.0mm Cable	AQ	Aqua	F50	125.0um	05	0.5um	BK	Black	S	Square Dust Cap	N	No Tube (5.0mm)
		5M	Middle Boot	50	Φ 5.0mm Cable			BL	Blue	F60	126.0um	40	4.0um	Y	Yellow (2.0/3.0mm)						
		5B	Bendi Boot	GR	Green																
		HV	Heather Violet																		
LG	Lime Green																				




For the interactive product number table, [click here](#) or scan QRC

# LC Push-Pull Uniboot Connector v5

The LC Push-Pull Uniboot Connector v5 is a durable design built for FTTH applications and offers a precision grip for easy extraction. For a fast polarity change in the field, our quick Click & Flip polarity change makes it simple and no jig is required.

## Features:

- Precision grip for easy extraction and insertion
- Click & Flip polarity change, no jig required
- Available in a variety of colors: 

## Specs:

- Fiber Type: SM (9/125), MM (50/125, 62.5/125)
- Application Mode: SM, MM, APC
- Insertion Loss: 0.3dB or lower
- Return Loss: 55dB or more UPC, 65dB or more APC
- IEC-61754-20, IEC-61755-3-1 and TIA-604-10A-2002 Standard-Type LC



LC Push-Pull Uniboot Connectors v5 - Product Number Table

Body Type		Mode		Boot Type		Product Type		Cable Spec		Housing Color		Ferrule Type & ID		Concentricity		Boot Color		Pull-Tab Color		Dust Cap Type		Shrink Tube Type						
LC	LC Connector	S	Single Mode	5ST	Short Boot + Push-Pull Tab	P	Pre Assy	20	Φ 2.0mm Cable	AQ	Aqua	F50	125.0um	05	0.5um	BK	Black (5.0mm)	AQ	Aqua	S	Square Dust Cap	N	No Tube (5.0mm)					
										BG	Beige	F55	125.5um (SM Standard)	10	1.0um (Standard)	WH	White	BG	Beige			W	White					
				5LT	Long Boot + Push-Pull Tab			50	Φ 5.0mm Cable	BL	Blue	F60	126.0um	40	4.0um			BL	Blue					Y	Yellow			
				5BT	Bendi Boot + Push-Pull Tab					GR	Green					GR	Green											
										HV	Heather Violet					HV	Heather Violet											
										LG	Lime Green					LG	Lime Green											



For the interactive product number table, [click here](#) or scan QRC

# LC Pull Uniboot Connector

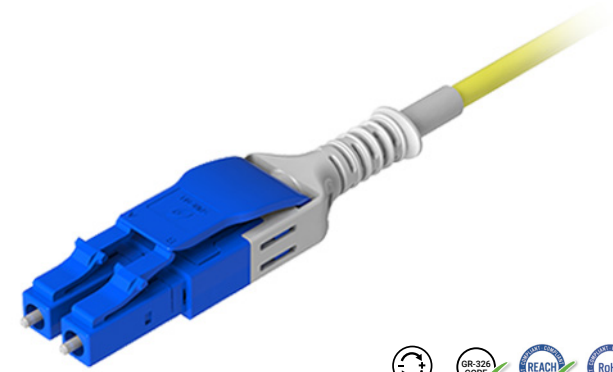
The new design incorporates a reinforced boot for a quick push-pull insertion and removal of the connector (no tabs needed). This new design helps conserve precious space in high-density panels and the color options assist with organization. Cable sizes available are 2.0mm and 3.0mm.

## Features:

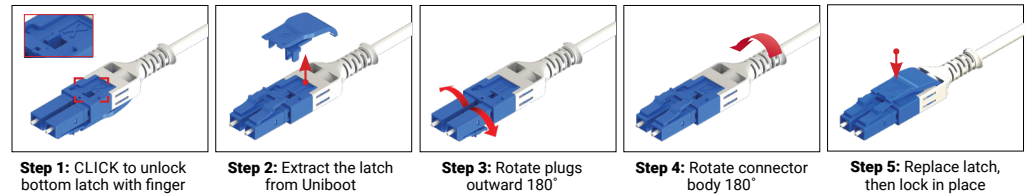
- “Just Grab It By the Boot” – a reinforced boot for fast insertion & removal
- New polarity change within boot, no tools or tabs required
- Designed specifically for HD packaging

## Specs:

- Fiber Type: SM (9/125), MM (50/125, 62.5/125)
- Application Mode: SM, MM, APC
- Insertion Loss: 0.3dB or lower
- Return Loss: 55dB or more UPC, 65dB or more APC
- IEC-61754-20 and TIA-604-10A-2002 Standard-Type LC



## New Polarity Change Process



## LC Pull Uniboot Connector - Product Number Table

Body Type		Mode		Boot Type		Product Type		Cable Spec		Housing Color		Ferrule Type & ID		Concentricity		Boot Color		Dust Cap Type		Shrink Tube Type	
LC	LC Connector	S	Single Mode	PUB	Pull Uniboot	P	Pre Assy	16	Φ 1.6mm Cable	AQ	Aqua	F50	125.0um	05	0.5um	WH	White	S	Square Dust Cap	W	White
		M	Multi Mode					20	Φ 2.0mm Cable	BG	Beige	F55	125.5um (SM Standard)	10	1.0um (Standard)			T	T Dust Cap		
		A	APC					30	Φ 3.0mm Cable	BL	Blue	F60	126.0um	40	4.0um						
											GR	Green									
										HV	Heather Violet										
										LG	Lime Green										




For the interactive product number table, [click here](#) or scan QRC

# LC Bendi Boot Connector

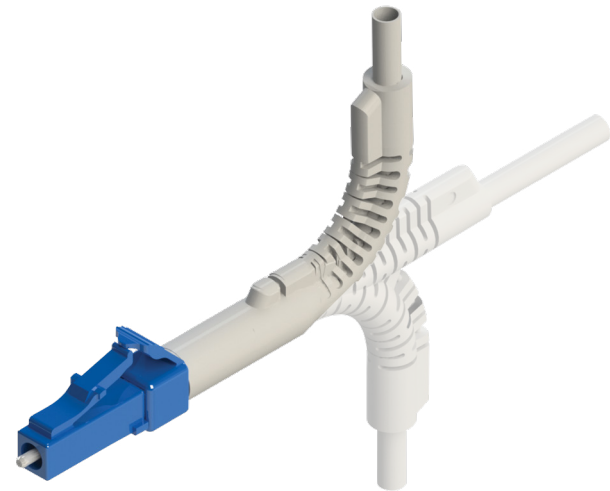
This specially designed boot offers versatility, freedom of movement, and superior access to high-density panels. Compatible with LC type cable systems, the LC Bendi Boot can be easily positioned by hand to maintain virtually any angle required by the application. This flexible boot is offered for LC simplex and duplex connectors.

## Features:

- Bendable boot that can conform to virtually any angle
- Two body type options: 2-piece or Unibody
- Available in a variety of colors: 

## Specs:

- Fiber Type: SM (9/125), MM (50/125, 62.5/125)
- Application Mode: SM, MM, APC
- Insertion Loss: 0.3dB or lower
- Return Loss: 55dB or more UPC, 65dB or more APC
- IEC-61754-20, IEC 61755-3-2 and TIA-604-10A-2002 Standard-Type LC



LC Bendi Boot Connector - Product Number Table

Body Type		Mode		Product Type		Cable Spec		Housing Color		Ferrule Type & ID		Concentricity		Boot Type		Boot Color		Dust Cap Type		Shrink Tube Type		
LC	2-Piece Body	SS	SM Simplex	P	Pre Assy	16	Φ 1.6mm Cable	AQ	Aqua	F50	Flat 125.0um	05	0.5um	BB	Bendi Boot	WH	White	S	Square Dust Cap	N	No tube	
LU	Unibody	MS	MM Simplex			20	Φ 2.0mm Cable	BG	Beige	F55	Flat 125.5um	10	1.0um (Standard)							W	White (Simplex)	
		AS	APC Simplex			30	Φ 3.0mm Cable	BL	Blue	F60	Flat 126.0um	40	4.0um							Y	Yellow (Simplex)	
		SD	SM Duplex					GR	Green												WW	White & White (Duplex)
		MD	MM Duplex					HV	Heather Violet												WY	White & Yellow (Duplex)
		AD	APC Duplex																			YY




For the interactive product number table, [click here](#) or scan QRC

# LC Internal Shutter Slimpack Adapters - Duplex & Quad

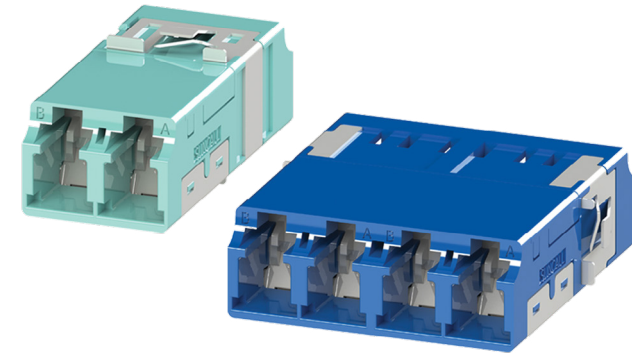
Save panel space with the LC Internal Shutter Adapter. It has been updated with a new trimmer and compact footprint. The reduced height of 9.4mm allows for high-density packaging and the choice of side or vertical spring latches provides custom installation options. The internal shutters provide maximum protection from lasers, dust, and other debris while protecting the ferrule.

## Features:

- Reduced height of 9.4mm for high-density packaging
- 2 spring latch designs available
- Shutter doors available in white or translucent
- Available in a variety of colors: 

## Specs:

- Application Mode: SM, MM, APC
- Insertion Loss: 0.2dB or lower
- Return Loss: 55dB or more UPC, 65dB or more APC
- IEC-61754-20 and TIA 604-10A-2002 Standard Type LC



LC Internal Shutter Slimpack Adapters - Duplex & Quad - Product Number Table

Series		Spring Type		Housing Type		Sleeve Type		Housing Color	
LC2I	LC DX Internal Shutter (White)	R	Regular	SP	Slimpack (9.4mm)	Z	Zirconia	AQ	Aqua
LC2T	LC DX Internal Shutter (Translucent)	S	Side Stable					BG	Beige
LC4I	LC QD Internal Shutter (White)	V	Vertical Stable					BK	Black
LC4T	LC QD Internal Shutter (Translucent)	L	Rattle-less (Quad only)					BL	Blue
								BR	Brown
								GR	Green
								HV	Heather Violet
								LG	Lime Green
								OR	Orange
								RE	Red
								VT	Violet
								YE	Yellow



For the interactive product number table, [click here](#) or scan QRC

# LC Internal Shutter Slimpack Adapters - Clusters

The LC Internal Shutter Slimpack Cluster Adapters have been updated with a reduced height of 9.6 mm to allow for high-density packaging. The internal shutters provide maximum protection from lasers, dust, and other debris while protecting the ferrule.

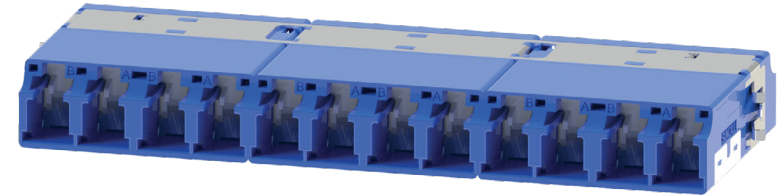
## Features:

- 9.6mm height for high-density packaging
- 6-, 8-, 12-core models
- Shutter doors available in white or translucent
- Available in a variety of colors:



## Specs:

- Application Mode: SM, MM, APC
- Insertion Loss: 0.2dB or lower
- Return Loss: 55dB or more UPC, 65dB or more APC
- IEC-61754-20 and TIA-604-10A-2002 Standard-Type LC



LC Internal Shutter Slimpack Adapters - Clusters - Product Number Table

Series	Core	Shutter Type	Spring Type	Housing Type	Sleeve Type	Housing Color							
LC	LC Series	6	6 Core	I	Internal Shutter (White)	S	Side Stable Spring	SP	Slimpack (9.6mm)	Z	Zirconia	AQ	Aqua
		8	8 Core	T	Internal Shutter (Translucent)							BG	Beige
		T	12 Core									BK	Black
												BL	Blue
												BR	Brown
												GR	Green
												HV	Heather Violet
												LG	Lime Green
												OR	Orange
												RE	Red
												VT	Violet
												YE	Yellow




For the interactive product number table, [click here](#) or scan QRC

# LC Internal Shutter Regular Adapters - Duplex & Quad

Our original LC Internal Shutter Adapters with a height of 11.4mm feature our uniquely designed internal shutters, with automatic open and close operation without touching the ferrule. The internal shutters offer maximum protection against lasers, dust and other contaminants.

## Features:

- Original height of 11.4mm
- 2 spring latch designs available
- Shutter doors available in white or translucent
- Available in a variety of colors: 

## Specs:

- Application Mode: SM, MM, APC
- Insertion Loss: 0.2dB or lower
- Return Loss: 55dB or more UPC, 65dB or more APC
- IEC-61754-20 and TIA 604-10A-2002 Standard Type LC



## LC Slimpack Quad Adapters - Product Number Table

Series		Spring Type		Housing Type		Sleeve Type		Housing Color	
LC2I	LC DX Internal Shutter (White)	S	Side Stable	HD	Regular (11.4mm)	Z	Zirconia	AQ	Aqua
LC2T	LC DX Internal Shutter (Translucent)	V	Vertical Stable					BG	Beige
LC4I	LC QD Internal Shutter (White)	L	Rattle-less (Quad only)					BK	Black
LC4T	LC QD Internal Shutter (Translucent)							BL	Blue
								BR	Brown
								GR	Green
								HV	Heather Violet
								LG	Lime Green
								OR	Orange
								RE	Red
								VT	Violet
								YE	Yellow




For the interactive product number table, [click here](#) or scan QRC

# LC Internal Shutter Regular Adapters - Clusters

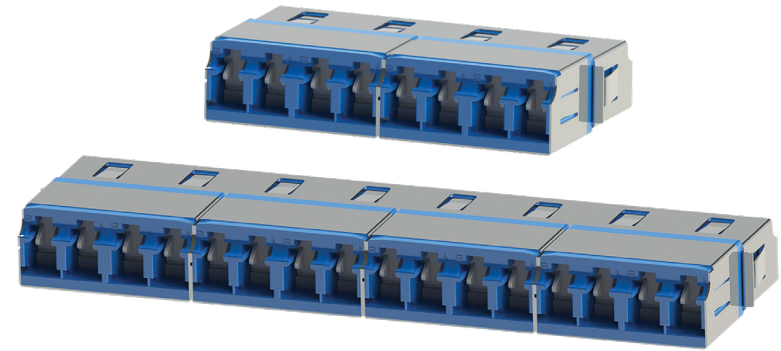
Our original LC Internal Shutter Cluster Adapters provide optimum performance and stability. The 6-, 8-, 12-, and 16-core models are available with internal shutters, as well as standard spring or rattle-less style options. Our clusters have a zirconia split-sleeve style and are available in a variety of housing colors.

## Features:

- Original height of 11.4mm
- 6-, 8-, 12-, 16-core models
- Shutter doors available in white or translucent
- Available in a variety of colors: 

## Specs:

- Application Mode: SM, MM, APC
- Insertion Loss: 0.2dB or lower
- Return Loss: 55dB or more UPC, 65dB or more APC
- IEC-61754-20 and TIA-604-10A-2002 Standard-Type LC



LC Internal Shutter Regular Adapters - Clusters - Product Number Table

Series	Core	Shutter Type	Spring Type	Housing Type	Sleeve Type	Housing Color							
LC	LC Series	6	6 Core	I	Internal Shutter (White)	R	Regular	HD	Regular (11.4mm)	Z	Zirconia	AQ	Aqua
		8	8 Core	T	Internal Shutter (Translucent)	L	Rattle-less					BG	Beige
		T	12 Core				BK					Black	
		S	16 Core				BL					Blue	
												BR	Brown
												GR	Green
												HV	Heather Violet
												LG	Lime Green
												OR	Orange
												RE	Red
												VT	Violet
												YE	Yellow



For the interactive product number table, [click here](#) or scan QRC

# LC Simplex & Duplex Standard Adapters

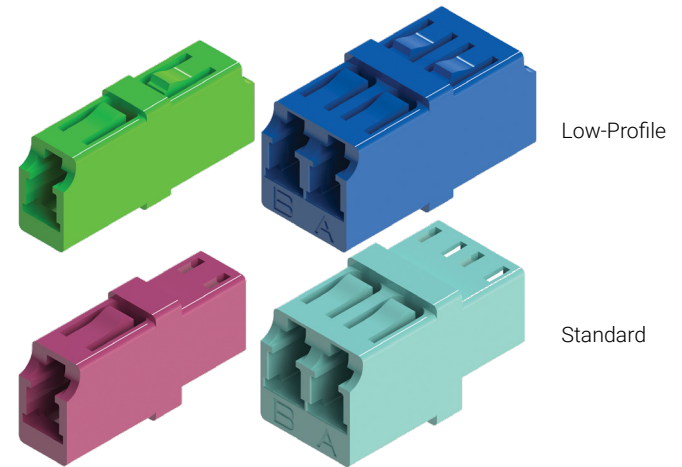
Our LC Standard Adapters are precision molded and designed to fit any LC type connector. Used for single, multi-mode and APC applications, LC Simplex and Duplex Adapters are available in both standard and low-profile designs with zirconia split-sleeves.

## Features:

- 2 design options: Standard & Low-Profile
- Available in a variety of colors: 

## Specs:

- Application Mode: SM, MM, APC
- Insertion Loss: 0.2dB or lower
- Return Loss: 55dB or more UPC, 65dB or more APC
- IEC-61754-20 and TIA-604-10A-2002 Standard-Type LC



LC Simplex Standard Adapters - Product Number Table

Series		Sleeve Type		Housing Color	
LC1NPLP	LC Simplex Low-Profile	Z	Zirconia	AQ	Aqua
LC1NPRP	LC Simplex Standard			BG	Beige
				BK	Black
				BL	Blue
				BR	Brown
				GR	Green
				HV	Heather Violet
				LG	Lime Green
				OR	Orange
				RE	Red
				VT	Violet
				YE	Yellow



For the interactive product number table, [click here](#) or scan QRC

LC Duplex Standard Adapters - Product Number Table

Series		Sleeve Type		Housing Color	
LC2NPLP	LC Duplex Low-Profile	Z	Zirconia	AQ	Aqua
LC2NPRP	LC Duplex Standard			BG	Beige
LC2NPCF	LC Duplex Compact Full Flange			BK	Black
				BL	Blue
				BR	Brown
				GR	Green
				HV	Heather Violet
				LG	Lime Green
				OR	Orange
				RE	Red
				VT	Violet
				YE	Yellow



For the interactive product number table, [click here](#) or scan QRC

# LC Slimpack Duplex Adapters

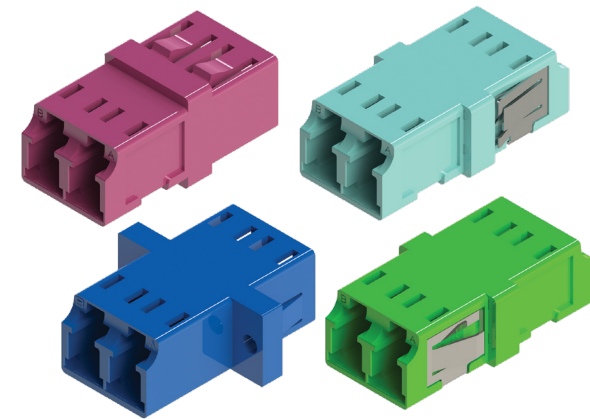
Designed to fit a single, compact modular space, LC Slimpack Duplex Adapters are available in various styles to best suit the needs of the application.

Select from four configurations with zirconia split-sleeves:

- Screw flange
- Vertical flange
- Metal latch
- Snug-in

## Specs:

- Fiber Type: SM (9/125), MM (50/125, 62.5/125)
- Application Mode: SM, MM, APC
- Insertion Loss: 0.2dB or lower
- Return Loss: 55dB or more UPC, 65dB or more APC
- IEC-61754-20 and TIA-604-10A-2002 Standard-Type LC



## LC Slimpack Duplex Adapters - Product Number Table

Series		Sleeve Type	Housing Color
LC2NSCR	LC Slimpack Duplex without Flange	Z Zirconia	AQ Aqua
LC2NPCL	LC Slimpack Duplex with Flange		BG Beige
LC2NFCR	LC Slimpack Duplex Snug-In		BK Black
LC2NPVL	LC Slimpack Duplex Vertical Flange		BL Blue
			BR Brown
			GR Green
			HV Heather Violet
			LG Lime Green
			OR Orange
			RE Red
			VT Violet
			YE Yellow



For the interactive product number table, [click here](#) or scan QRC

# LC Slimpack Quad Adapters

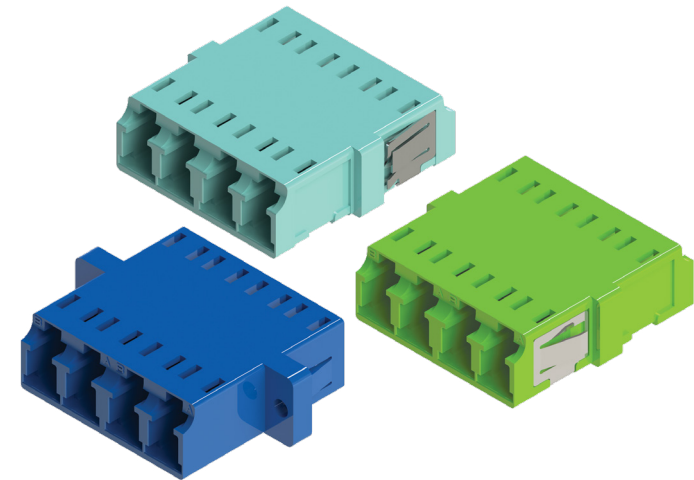
LC Slimpack Quad Adapters can accommodate multiple LC fiber optic cables in a space-efficient design, featuring a variety of styles including screw flange, metal latch, and snug-in configurations.

## Features:

- Select from 3 configurations
- Available in a variety of colors: 

## Specs:

- Fiber Type: SM (9/125), MM (50/125, 62.5/125)
- Application Mode: SM, MM, APC
- Insertion Loss: 0.2dB or lower
- Return Loss: 55dB or more UPC, 65dB or more APC
- IEC-61754-20 and TIA-604-10A-2002 Standard-Type LC



LC Slimpack Quad Adapters - Product Number Table

Series		Housing Type		Sleeve Type		Housing Color	
LC4NS	LC Slimpack Quad Metal Latch	CR	Compact Receptacle	Z	Zirconia	AQ	Aqua
LC4NP	LC Slimpack Quad with Screw Flange	CL	Compact Low-Profile			BG	Beige
LC4NF	LC Slimpack Quad Snug-in					BK	Black
						BL	Blue
						BR	Brown
						GR	Green
						HV	Heather Violet
						LG	Lime Green
						OR	Orange
						RE	Red
						VT	Violet
						YE	Yellow




For the interactive product number table, [click here](#) or scan QRC

# LC External Shutter Adapters

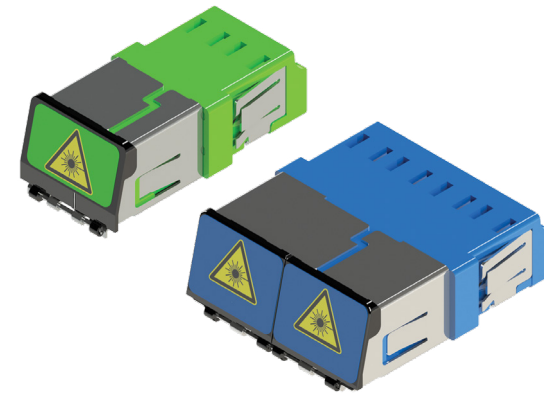
Our line of LC External Shutter Adapters feature practical external shutters designed to effectively protect the entire coupler opening from dust and contaminants, while reducing eye exposure to lasers. The durable metal spring latches ensure a tight fit.

## Features:

- Duplex and Quad models
- External Shutters
- Available in a variety of colors: 

## Specs:

- Fiber Type: SM (9/125), MM (50/125, 62.5/125)
- Application Mode: SM, MM, APC
- Insertion Loss: 0.2dB or lower
- Return Loss: 55dB or more UPC, 65dB or more APC
- IEC-61754-20 and TIA-604-10A-2002 Standard-Type LC



LC External Shutter Adapters - Product Number Table

Series		Sleeve Type		Housing Color	
LC2ESCR	LC DX External Shutter Adapter	Z	Zirconia	AQ	Aqua
LC4ESCR	LC QD External Shutter Adapter			BG	Beige
				BK	Black
				BL	Blue
				BR	Brown
				GR	Green
				HV	Heather Violet
				LG	Lime Green
				OR	Orange
				RE	Red
				VT	Violet
				YE	Yellow




For the interactive product number table, [click here](#) or scan QRC

# MPO Connector

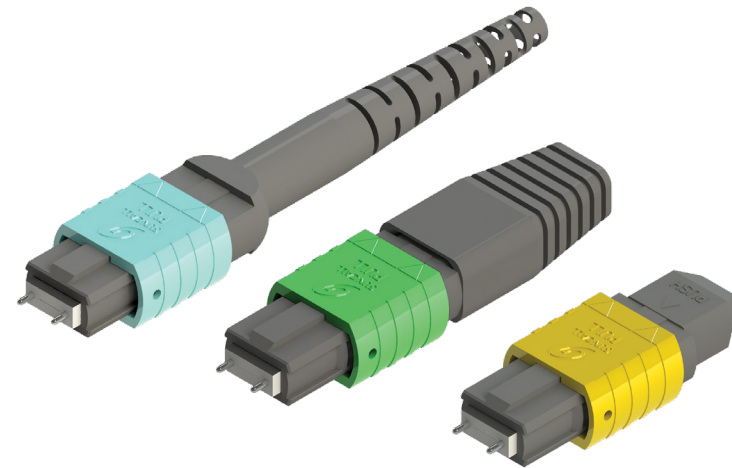
MPO Connectors provide the exceptional performance and dependability required for the industry's most demanding high-speed systems and networks. Designed with the familiar push-pull operation for easy insertion and removal, our MPO Connectors are built to deliver lower insertion loss—with various boot-type options available. Customize your connector with a variety of options including: boot-type, ferrule type, housing colors, and more.

## Features:

- 3 boot type: Round short, Round Regular and Ribbon
- Available in a variety of housing colors: 

## Specs:

- Fiber Type: 12 Fibers, 24 Fibers
- Application Mode: SM, MM, Low Loss SM, Low Loss MM
- Insertion Loss: SL 0.35dB/SM 0.7dB/ML 0.35dB/MM 0.6dB
- Return Loss: SL 60dB (8°polish)/SM 60dB (8°polish)/ML 20dB (flat polish)/ MM 20dB (flat polish)
- IEC-61754-7



MPO Connectors - Product Number Table

Series		Product Type		Gender Type		Housing Color		Ferrule Core/No Ferrule		Ferrule Type		Boot Type		Crimp Type		Cable Spec		Logo		
MPO	MPO Series	PA	Pre Assy	M	Male	AQ	Aqua	W08	8 Core	SM	SM	RS	Round Short Boot	HS	Heat Shrink Tube	20N	Φ 2.0mm Cable (RS only)	L	Suncall Logo	
				F	Female	BG	Beige	W12	12 Core	SL	SM Low Loss	RD	Round Standard Boot	OC	One Crimp	30N	Φ 3.0mm Cable (RD only)	N	No Logo	
						BK	Black	W24	24 Core	MM	MM	BS	Ribbon	TC	Two Crimp	35N	Φ 3.5mm Cable			
						GR	Green	N08	8 Core without ferrule	ML	MM Low Loss	JS	Ribbon with Jacket			NN	NA (BS & JS only)			
						HV	Heather Violet	N12	12 Core without ferrule											
						YE	Yellow	N24	24 Core without ferrule											




For the interactive product number table, [click here](#) or scan QRC

# MPO 12F Pull Boot Connector

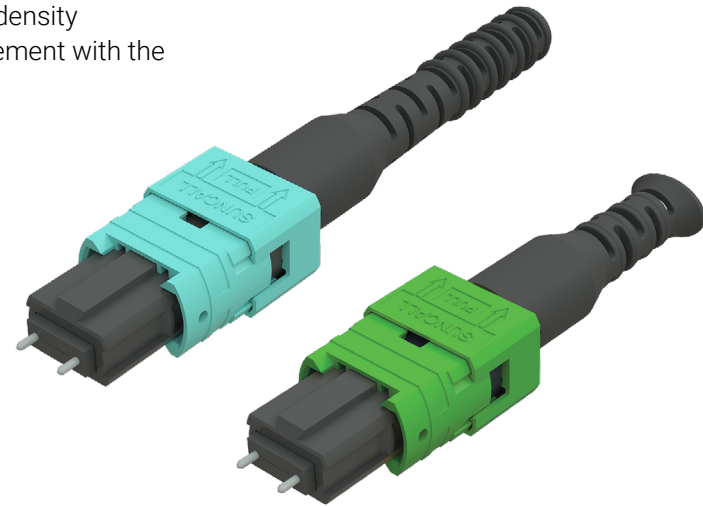
Our reinforced push-pull boot design provides easy connect and disconnect during high-density mountings, no tabs required. Save space with the trim design and improve cable management with the variety of housing colors available. This sturdy design is available in 2.0mm and 3.0mm.

## Features:

- Designed specifically for high-density packaging with an easy connect & disconnect
- Reinforced pull boot eliminates the need for a tab
- Now available in a Short Pull Boot
- Available in a variety of housing colors: 

## Specs:

- Fiber Type: 12 Fibers, 24 Fibers
- Application Mode: SM, MM, Low Loss SM, Low Loss MM
- Insertion Loss: SL 0.35dB/SM 0.7dB/ML 0.35dB/MM 0.6dB
- Return Loss: SL 60dB (8°polish)/SM 60dB (8°polish)/ ML 20dB (flat polish)/ MM 20dB (flat polish)
- IEC-61754-7



MPO Pull Boot Connectors - Product Number Table

Series		Product Type		Gender Type		Housing Color		Ferrule Core/No Ferrule		Ferrule Type		Boot Type		Crimp Type		Cable Spec		Logo			
MPO	MPO Series	PA	Pre Assy	M	Male	AQ	Aqua	W08	8 Core	SM	Single Mode	RD	Round Standard Boot	TC	Two Crimp	20P	Φ 2.0mm Cable Pull Boot	L	Suncall Logo		
				F	Female	BG	Beige	W12	12 Core	SL	Single Mode Low Loss	RS	Round Short Boot	HS	Heat Shrink Tube	30P	Φ 3.0mm Cable Pull Boot	N	No Logo		
				BK	Black	W24	24 Core	MM	Multi Mode			OC	One Crimp (RS only)								
				GR	Green	N08	8 Core without ferrule	ML	Multi Mode Low Loss												
				LG	Lime Green	N12	12 Core without ferrule														
				HV	Heather Violet	N24	24 Core without ferrule														
				YE	Yellow																




For the interactive product number table, [click here](#) or scan QRC

# MPO 16F Pull Boot Connector

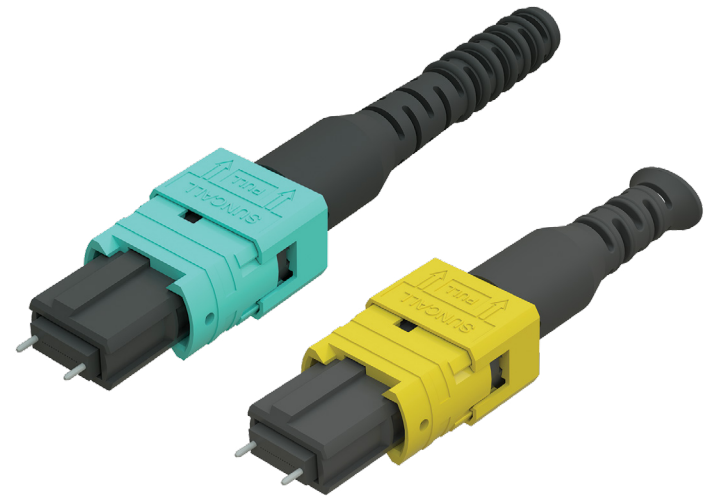
**Introducing our new MPO 16F Pull Boot Connector.** The newly released MPO 16F Pull Boot Connector takes our proven technology into a high fiber count option. The 16F design has the standard off-center key position and is available in two boot styles and 2 cable sizes (2.0mm and 3.0mm).

## Features:

- Designed with industry standard off-center key position
- Select from 2 boot styles: Round Standard or Round Short
- Available in a variety of housing colors: 

## Specs:

- Fiber Type: 16 Fibers, 32 Fibers
- Application Mode: SM, MM, SM Low Loss, MM Low Loss
- Insertion Loss: SL 0.35dB/SM 0.7dB/ML 0.35dB/MM 0.6dB
- Return Loss: SL 60dB (8°polish)/SM 60dB (8°polish)/ ML 20dB (flat polish)/ MM 20dB (flat polish)
- IEC-61754-7 and TIA 604-18



MPO 16F Connectors - Product Number Table

Series		Product Type		Gender Type		Housing Color		Ferrule Core/No Ferrule		Ferrule Type		Boot Type		Crimp Type		Cable Spec		Logo	
MPO	MPO Series	P	Pre Assy	M	Male	AQ	Aqua	W16	16 Core	SM	Single Mode	RD	Round Standard Boot	OC	One Crimp (3.0 mm only)	20P	Φ 2.0mm Cable	L	Suncall Logo
				F	Female	BG	Beige	N16	16 Core without ferrule	SL	Single Mode Low Loss	RS	Round Short Boot (3.0 mm only)	HS	Heat Shrink (2.0 mm only)	30P	Φ 3.0mm Cable	N	No Logo
						BK	Black			MM	Multi Mode								
						GR	Green			ML	Multi Mode Low Loss								
						LG	Lime Green												
						HV	Heather Violet												
						YE	Yellow												




For the interactive product number table, [click here](#) or scan QRC

# MPO 12F Internal Shutter Adapters

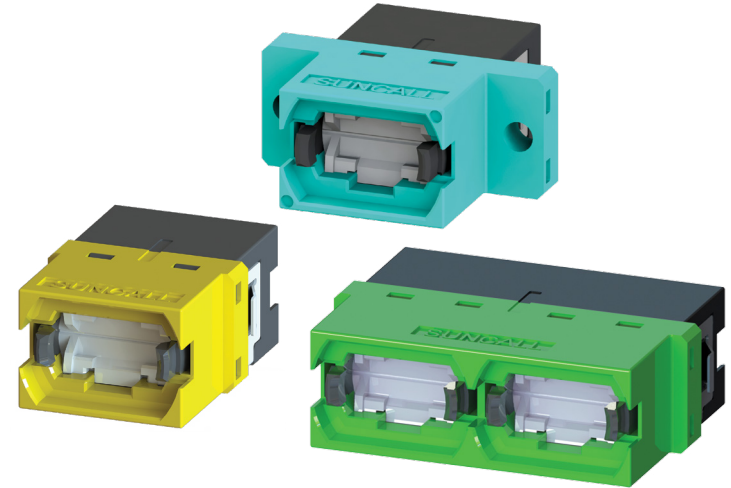
Developed for front-of-rack usage, our award-winning design incorporates unique internal shutters that provide protection from lasers, dust and debris while protecting the ferrule. The internal shutters also allow for quick VFL detection. With an SC footprint, the size allows for quick interchange with current LC & SC adapter configurations. For organizing your panels, we offer a variety of housing colors.

## Features:

- Simplex and Duplex style
- SC footprint for quick interchangeable with LC and SC configurations
- Internal shutters provide quick VFL detection
- Available in a variety of housing colors: 

## Specs:

- Fiber Type: 12 Fibers, 24 Fibers
- Application Mode: SM, MM, Low Loss SM, Low Loss MM
- Insertion Loss: SL 0.35dB/SM 0.7dB/ML 0.35dB/MM 0.6dB
- Return Loss: SL 60dB (8°polish)/SM 60dB (8°polish)/ML 20dB (flat polish)/ MM 20dB (flat polish)
- IEC-61754-7-MPO-1996 and TIA-604-5 Type MPO



MPO 12F Internal Shutter Adapters - Product Number Table

Series		Product Type		Shutter Type		Key Type		Spring Type		Flange Type		BTW Housing Color		OTW Housing Color		Logo			
MPO	MPO	1	Simplex	I	White Shutter	UU	Key Up-Key Up	W	With Spring	W	With Flange (Simplex only)	AQ	Aqua	AQ	Aqua	L	Suncall Logo		
												N	Reduced Flange	BG	Beige	BG	Beige	N	No Logo
		2	Duplex	T	Translucent Shutter	UD	Key Up-Key Down							BK	Black	BK	Black		
														BL	Blue	BL	Blue		
														CG	Cool Gray	CG	Cool Gray		
														GR	Green	GR	Green		
														LG	Lime Green	LG	Lime Green		
														HV	Heather Violet	HV	Heather Violet		
														YE	Yellow	YE	Yellow		



For the interactive product number table, [click here](#) or scan QRC

# MPO 12F Internal Shutter Cluster Adapters

**A Suncall Exclusive – MPO 12F Internal Shutter Cluster Adapters.** We have integrated our award-winning design into the new 4- and 6-port cluster models. The internal shutters provide protection from lasers, dust and debris while protecting the ferrule.

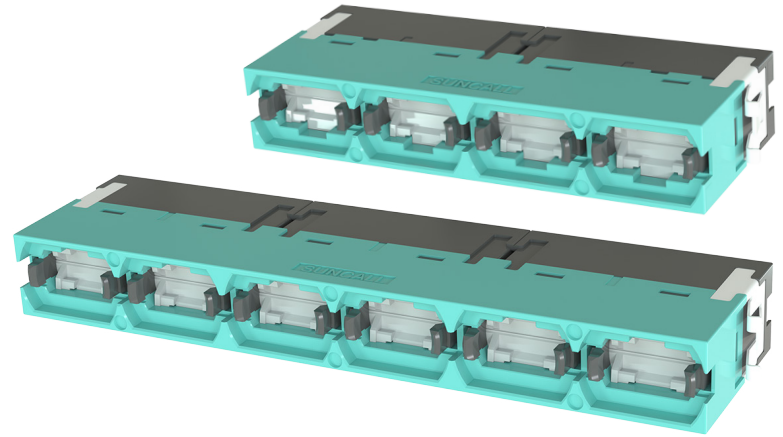
Both adapter sizes interchange with one of our LC cluster adapters respectively. Bringing more fibers to your panels has just gotten easier.

## Features:

- 9.4 mm height for high-density packaging
- The 6-Port MPO Cluster interchangeable with Suncall LC 12-port clusters
- The 4-Port MPO Cluster interchangeable with Suncall LC 8-port clusters

## Specs:

- Fiber Type: 12 Fibers, 24 Fibers
- Application Mode: SM, MM, Low Loss SM, Low Loss MM
- Insertion Loss: SL 0.35dB/SM 0.7dB/ML 0.35dB/MM 0.6dB
- Return Loss: SL 60dB (8°polish)/SM 60dB (8°polish)/ML 20dB (flat polish)/ MM 20dB (flat polish)
- IEC-61754-7 MPO and TIA-604-5 Type MPO



**A Suncall Exclusive**

**MPO 12F Internal Shutter Cluster Adapters - Product Number Table**

Series		Product Type		Shutter Type		Key Type		Spring Type		Flange Type		BTW Housing Color		OTW Housing Color		Logo	
MPO	MPO	TC4	4 Port Adapter (12F/24F)	I	White Shutter	UU	Key Up-Key Up	W	With Spring	N	No Flange	AQ	Aqua	AQ	Aqua	L	Suncall Logo
		TC6	6 Port Adapter (12F/24F)	T	Translucent Shutter	UD	Key Up-Key Down					BG	Beige	BG	Beige	N	No Logo
												BK	Black	BK	Black		
												BL	Blue	BL	Blue		
												CG	Cool Gray	CG	Cool Gray		
												GR	Green	GR	Green		
												YE	Yellow	YE	Yellow		



For the interactive product number table, [click here](#) or scan QRC

# MPO 16F Internal Shutter Adapters

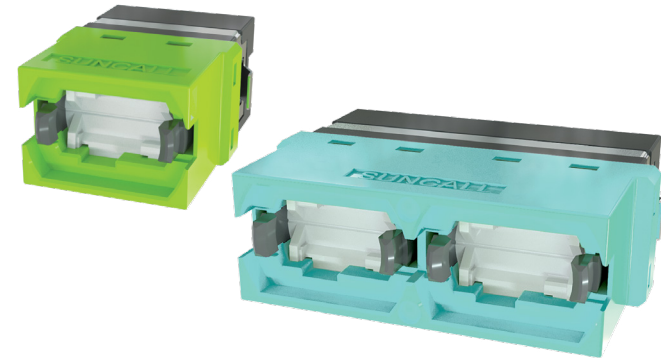
**Only from Suncall.** Based on our award-winning MPO internal shutter adapter design, the new 16F Internal Shutter Adapters bring even more fibers to your panels with the safety and protection of internal shutters. The internal shutters offer many benefits including: front-of-rack usage, quick VFL detection as well as requiring less dust caps for shipping helping to reduce plastic waste. The SC footprint allows for easy integration and interchanges quickly. Available in different key combinations and a variety of housing colors.

## Features:

- Simplex and Duplex style
- Internal shutters for safety & protection
- SC footprint for quick interchange with LC and SC configurations
- Designed with industry standard off-center key position

## Specs:

- Fiber Type: 16 Fibers, 32 Fibers
- Application Mode: SM, MM, Low Loss SM, Low Loss MM
- Insertion Loss: SL 0.35dB/SM 0.7dB/ML 0.35dB/MM 0.6dB
- Return Loss: SL 60dB (8°polish)/SM 60dB (8°polish)/ML 20dB (flat polish)/ MM 20dB (flat polish)
- IEC-61754-7-3-2019 and TIA-604-18-2015



**A Suncall Exclusive**

MPO 16F Internal Shutter Adapters - Product Number Table

Series		Product Type		Shutter Type		Key Type		Spring Type		Flange Type		BTW Housing Color		OTW Housing Color		Logo	
MPO	MPO	3	1 Core Adapter Simplex 16F/32F	I	White Shutter	UU	Key Up-Key Up	W	With Spring	N	Reduced Flange	AQ	Aqua	AQ	Aqua	L	Suncall Logo
		4	2 Core Adapter Duplex 16F/32F	T	Translucent Shutter	UD	Key Up-Key Down					BG	Beige	BG	Beige	N	No Logo
												BK	Black	BK	Black		
												BL	Blue	BL	Blue		
												CG	Cool Gray	CG	Cool Gray		
												GR	Green	GR	Green		
												YE	Yellow	YE	Yellow		



For the interactive product number table, [click here](#) or scan QRC

# MPO 16F Internal Shutter Cluster Adapters

**NEW – A Suncall Exclusive – MPO 16F Internal Shutter Cluster Adapters.** Based off our 12F cluster adapters, our New 16F Internal Shutter Cluster Adapters integrate the same award-winning shutter design to provide stability, protection and reduces waste (no dust caps needed on the front side). The internal shutters provide protection from lasers, dust and debris while protecting the ferrule.

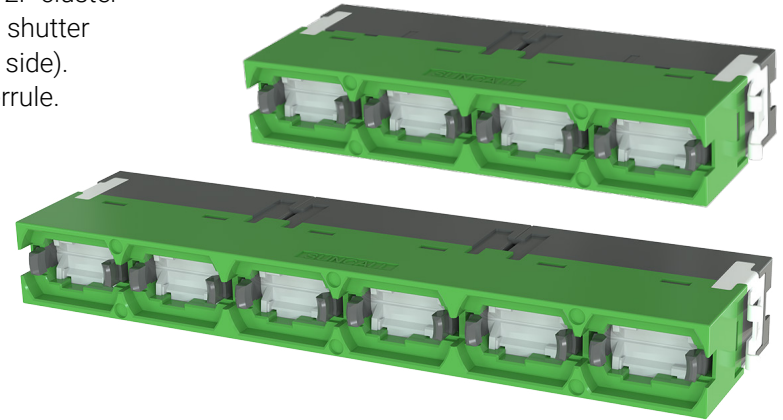
Both adapter sizes interchange with one of our LC cluster adapters respectively.

## Features:

- 9.4 mm height for high-density packaging
- The 6-Port MPO Cluster interchangeable with Suncall LC 12-port clusters
- The 4-Port MPO Cluster interchangeable with Suncall LC 8-port clusters

## Specs:

- Fiber Type: 16 Fibers, 32 Fibers
- Application Mode: SM, MM, Low Loss SM, Low Loss MM
- Insertion Loss: SL 0.35dB/SM 0.7dB/ML 0.35dB/MM 0.6dB
- Return Loss: SL 60dB (8°polish)/SM 60dB (8°polish)/ML 20dB (flat polish)/ MM 20dB (flat polish)
- IEC-61754-7-3-2019 and TIA-604-18-2015



**A Suncall Exclusive**

MPO 12F Internal Shutter Cluster Adapters - Product Number Table

Series		Product Type		Shutter Type		Key Type		Spring Type		Flange Type		BTW Housing Color		OTW Housing Color		Logo	
MPO	MPO	S4	4 Port Adapter (16F/32F)	I	White Shutter	UU	Key Up-Key Up	W	With Spring	N	No Flange	AQ	Aqua	AQ	Aqua	L	Suncall Logo
		S6	6 Port Adapter (16F/32F)	T	Translucent Shutter	UD	Key Up-Key Down					BG	Beige	BG	Beige	N	No Logo
												BK	Black	BK	Black		
												BL	Blue	BL	Blue		
												CG	Cool Gray	CG	Cool Gray		
												GR	Green	GR	Green		
												YE	Yellow	YE	Yellow		



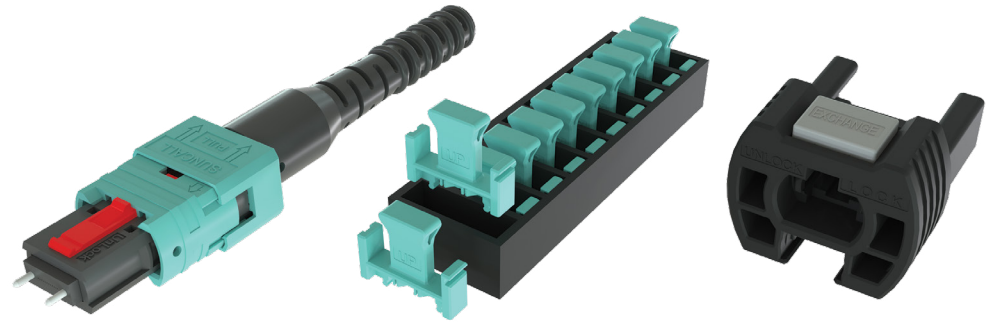
For the interactive product number table, [click here](#) or scan QRC

# MPO Multifunction Connector & Exchanger Tool Set

This handy tool set was developed to make changing gender and polarity fast and easy without fumbling with small parts. The two tools work in harmony to assist with the gender and polarity change of the MPO Multifunction Connector.

**The set includes:**

- MPO Multifunction Connector with reinforced pull boot
- Exchanger Pin Tool
- Housing Tool
- Storage Tray



**Specs:**

- Fiber Type: 12 Fibers, 24 Fibers
- Application Mode: SM, MM, Low Loss SM, Low Loss MM
- Insertion Loss: SL 0.35dB/SM 0.7dB/ML 0.35dB/MM 0.6dB
- Return Loss: SL 60dB (8°polish)/SM 60dB (8°polish)/ ML 20dB (flat polish)/ MM 20dB (flat polish)
- IEC-61754-7 and TIA-604-5-D



**A Suncall Exclusive**

**MPO Multifunction Connector - Product Number Table**

Series		Product Type		Gender Type		Housing Color		Ferrule Core/No Ferrule		Ferrule Type		Boot Type		Crimp Type		Cable Spec		Logo	
MPO	MPO Series	PA	Pre Assy	M	Male	AQ	Aqua	W12	12 Core	SM	Single Mode	RD	Round Standard Boot	OC	One Crimp	30P	Φ 3.0mm Cable Pull Boot	L	Suncall Logo
				F	Female	BG	Beige	N12	12 Core without ferrule	SL	Single Mode Low Loss								
						BK	Black			MM	Multi Mode								
						GR	Green			ML	Multi Mode Low Loss								
						LG	Lime Green												
						HV	Heather Violet												
						YE	Yellow												



For the interactive product number table, [click here](#) or scan QRC

**Exchanger Tool Set - Product Number Table**

Series		Product Type		Ferrule Core/No Ferrule		Ferrule Type		Pin	
MPO	MPO Series	MFT	MF Tool	12	12/24F Core	SM	Single Mode	W	With Pin
						SL	Single Mode Low Loss	N	Without Pin
						MM	Multi Mode		

# MPO Simplex Adapters

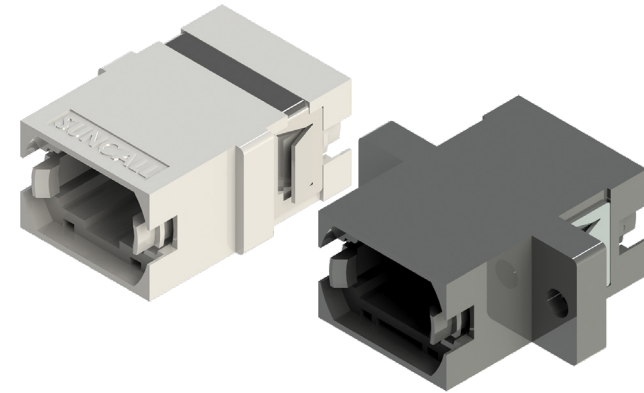
The compact design of our MPO Simplex Adapters allow for single, multi-mode or APC applications with a variety of options and styles to best suit the needs of the application. The MPO Simplex Adapter is compatible with any MPO type product, and the high-density packaging makes it ideal for tight-fitting spaces.

## Features:

- Compact design
- Available with a flange or a reduced flange

## Specs:

- Fiber Type: 12 Fibers, 24 Fibers
- Application Mode: SM, MM, Low Loss SM, Low Loss MM
- Insertion Loss: SL 0.35dB/SM 0.7dB/ML 0.35dB/MM 0.6dB
- Return Loss: SL 60dB (8°polish)/SM 60dB (8°polish)/ML 20dB (flat polish)/ MM 20dB (flat polish)
- IEC-61754-7-MPO-1996 and TIA-604-5 Type MPO



MPO Simplex Adapters - Product Number Table

Series		Product Type		Shutter Type		Key Type		Spring Type		Flange Type		Housing Color		Logo	
MPO	MPO	1	Simplex	N	No Shutter	UU	Key Up-Key Up	W	With Spring	W	With Flange	BK	Black	L	Suncall Logo
						UD	Key Up-Key Down	N	No Spring	N	Reduced Flange	GY	Gray (UU only)	N	No Logo



For the interactive product number table, [click here](#) or scan QRC

# SC Simplex Connector

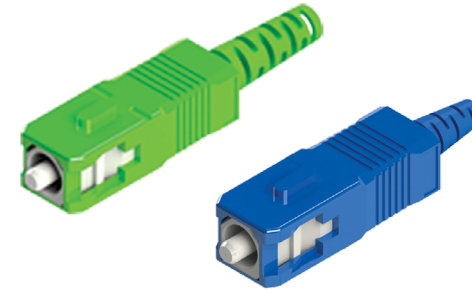
Our popular SC Simplex Connectors receive high marks for performance and reliability. They feature a compact design ideal for high-density applications, as well as optional cone- and step-type models for APC ferrules.

## Features:

- Spring loaded for a stable connection
- Easy push-pull connect/disconnect
- Customize thru a wide variety of options

## Specs:

- Fiber Type: SM (9/125), MM (50/125, 62.5/125)
- Application Mode: SM, MM, APC
- Insertion Loss: 0.3dB or lower
- Return Loss: 55dB or more UPC, 65dB or more APC
- IEC-61754-4-SC:2002, IEC-61755-3-2 and TIA-604-3-B



SC Simplex Connectors - Product Number Table

Body Type		Mode		Product Type		Cable Spec		Housing Color		Ferrule Type & ID		Concentricity		Boot Type		Boot Color		Dust Cap Type		Shrink Tube Type	
SC	SC Connector	SS	Single Mode Simplex	P	Pre Assy	09	Φ 0.9mm Cable	AQ	Aqua	P50	Pre Radius 125.0um	05	0.5um	RB	Rubber Boot	AQ	Aqua	T	T Dust Cap	N	No Tube (0.9mm)
		MS	Multi Mode Simplex			20	Φ 2.0mm Cable	BG	Beige	P55	Pre Radius 125.5um	10	1.0um (Standard)	SB	Short Boot	BG	Beige			W	White
		AS	APC Simplex			30	Φ 3.0mm Cable	BL	Blue	P60	Pre Radius 126.0um	40	4.0um	BC	Bellcore Boot	BL	Blue			Y	Yellow
				GR	Green (APC)	S50	Step 125.0um			MB	Middle Boot	GR	Green (APC)								
						C50	Conical 125.0um					WH	White								



For the interactive product number table, [click here](#) or scan QRC

# SC Duplex Connector

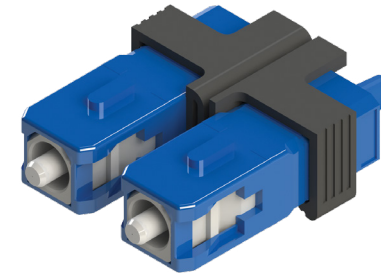
Suncall's SC Connectors receive high marks for performance and reliability, featuring a compact design ideal for high-density applications as well as optional cone and step type models for APC ferrules. Our unique duplex clip joins two simplex connectors together making a sturdy duplex configuration.

## Features:

- Spring loaded for a stable connection
- Sturdy configuration with our unique clip

## Specs:

- Fiber Type: SM (9/125), MM (50/125, 62.5/125)
- Application Mode: SM, MM, APC
- Insertion Loss: 0.3dB or lower
- Return Loss: 55dB or more UPC, 65dB or more APC
- IEC-61754-4-SC:2002, IEC-61755-3-2 and TIA-604-3-B



SC Duplex Connectors - Product Number Table

Body Type		Mode		Product Type		Cable Spec		Housing Color		Ferrule Type & ID		Concentricity		Boot Type		Boot Color		Dust Cap Type		Shrink Tube Type	
SC	SC Connector	SD	Single Mode Duplex	P	Pre Assy	09	Φ 0.9mm Cable	AQ	Aqua	P50	Pre Radius 125.0um	05	0.5um	BA	Buffer Adapter Boot (0.9mm)	AQ	Aqua	T	T Dust Cap	N	No Tube (0.9mm)
		MD	Multi Mode Duplex			20	Φ 2.0mm Cable	BG	Beige	P55	Pre Radius 125.5um	10	1.0um (Standard)	RB	Rubber Boot (0.9mm)	BG	Beige			WW	White & White
		AD	APC Duplex			30	Φ 3.0mm Cable	BL	Blue	P60	Pre Radius 126.0um	40	4.0um	SB	Short Boot	BL	Blue			WY	White & Yellow
						GR	Green (APC)	S50	Step 125.0um			BC	Bellcore Boot	GR	Green (APC)	YY	Yellow & Yellow				
								C50	Conical 125.0um			MB	Middle Boot	WH	White						



For the interactive product number table, [click here](#) or scan QRC

# SC Uniboot Connector

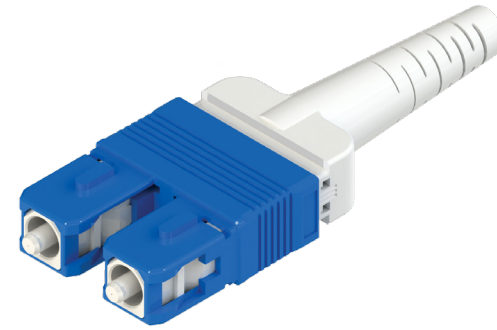
Our SC Uniboot Connectors feature a compact, lightweight design perfect for high-density applications. The durable stop-ring and crimp-ring structures provide a strong retention force to ensure continued high performance and stability.

## Features:

- Easy push-pull connect/disconnect design
- Strong retention force

## Specs:

- Fiber Type: SM (9/125), MM (50/125, 62.5/125)
- Application Mode: SM, MM, APC
- Insertion Loss: 0.3dB or lower
- Return Loss: 55dB or more UPC, 65dB or more APC
- IEC-61754-4-SC:2002, IEC-61755-3-2 and TIA-604-3-B



SC Uniboot Connectors - Product Number Table

Body Type		Mode		Product Type		Cable Spec		Housing Color		Ferrule Type & ID		Concentricity		Boot Color		Dust Cap Type		Shrink Tube Type	
SC	SC Connector	S1	Single Mode Simplex	P	Pre Assy	20	Φ 2.0mm Cable	AQ	Aqua	P50	Pre Radius 125.0um	05	0.5um	AQ	Aqua	T	T Dust Cap	W	White
		M1	Multi Mode Simplex			30	Φ 3.0mm Cable	BG	Beige	P55	Pre Radius 125.5um	10	1.0um (Standard)	BG	Beige				
		A1	APC Simplex					BL	Blue	P60	Pre Radius 126.0um	40	4.0um	BL	Blue				
						GR	Green (APC)	S50	Step 125.0um (APC)			GR	Green						
								C50	Conical 125.0um (APC)			WH	White						



For the interactive product number table, [click here](#) or scan QRC

# SC Bendi Boot Connector

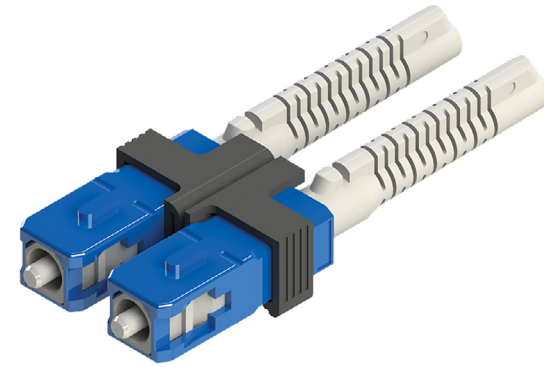
Our SC Bendi Boot is specially designed to offer versatility, freedom of movement, and superior access to high-density panels. Compatible with SC Type cable systems, the SC Bendi Boot can be easily positioned by hand and maintain any angle to provide better access to panels. For added versatility, a unique duplex clip can be used to modify two simplex connectors into one duplex connector.

## Features:

- Bendable boot maintains any angle
- Provides more access to panels
- Assists in cable management

## Specs:

- Fiber Type: SM (9/125), MM (50/125, 62.5/125)
- Application Mode: SM, MM, APC
- Insertion Loss: 0.3dB or lower
- Return Loss: 55dB or more UPC, 65dB or more APC
- IEC-61754-4-SC:2002, IEC-61755-3-2 and TIA-604-3-B



SC Bendi Boot Connectors - Product Number Table

Body Type		Mode		Product Type		Cable Spec		Housing Color		Ferrule Type & ID		Concentricity		Boot Type		Boot Color		Dust Cap Type		Shrink Tube Type	
SC	SC Connector	SS	Single Mode Simplex	P	Pre Assy	20	Φ 2.0mm Cable	AQ	Aqua	P50	Pre Radius 125.0um	05	0.5um	BB	Bendi Boot	BG	Beige	T	T Dust Cap	W	White
		MS	Multi Mode Simplex			30	Φ 3.0mm Cable	BG	Beige	P55	Pre Radius 125.5um	10	1.0um (Standard)			BL	Blue			Y	Yellow
		AS	APC Simplex					BK	Black	P60	Pre Radius 126.0um	40	4.0um			GR	Green			WW	White & White
		SD	Single Mode Duplex					BL	Blue	S50	Step 125.0um (APC)					WH	White			WY	White & Yellow
		MD	Multi Mode Duplex					GR	Green (APC)	C50	Conical 125.0um (APC)									YY	Yellow & Yellow
		AD	APC Duplex																		




For the interactive product number table, [click here](#) or scan QRC

# SC Simplex Internal Shutter Adapters

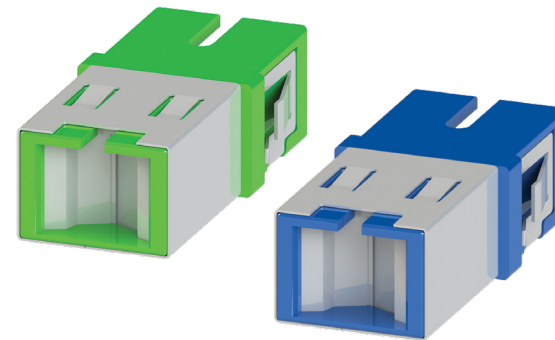
The New Suncall America SC Internal Shutter Adapters are used for single, multi-mode, or APC applications. The internal shutters provide maximum protection from lasers, dust and other debris while protecting the ferrule. The snap-in side spring latch provides quick and secure installation.

## Features:

- Simplex style
- No dust cap required for front receptacle
- Available in a variety of colors: 

## Specs:

- Fiber Type: SM (9/125), MM (50/125, 62.5/125)
- Application Mode: SM, MM, APC
- Insertion Loss: 0.2dB or lower
- Return Loss: 55dB or more UPC, 65dB or more APC
- IEC-61754-4-SC-ED and TIA 604-3-B



SC Simplex Internal Shutter Adapters - Product Number Table

Series		Shutter Type		Spring Type		Housing Type		Sleeve Type		Housing Color	
SC1	SC Simplex Adapter	I	White Internal Shutter	R	Regular Spring	SN	No Flange	Z	Zirconia	AQ	Aqua
		T	Translucent Internal Shutter	S	Side Stable Spring					BG	Beige
										BL	Blue
										GR	Green




For the interactive product number table, [click here](#) or scan QRC

# SC Simplex Adapters

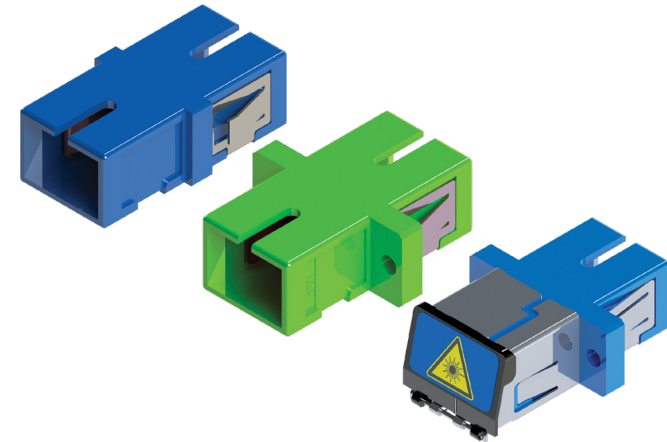
Our line of SC Simplex Adapters are used for single, multi-mode or APC applications with a variety of options and styles to best suit the needs of the application. SC Simplex Adapters are compatible with any SC Type product.

## Features:

- Select from 3 spring types
- Available in a variety of colors: 

## Specs:

- Fiber Type: SM (9/125), MM (50/125, 62.5/125)
- Application Mode: SM, MM, APC
- Insertion Loss: 0.2dB or lower
- Return Loss: 55dB or more UPC, 65dB or more APC
- IEC-61754-4-SC-ED and TIA 604-3-B



SC Simplex Internal Shutter Adapters - Product Number Table

Series		Shutter Type		Spring Type		Housing Type		Sleeve Type		Housing Color	
SC1	SC Simplex Adapter	N	No Shutter	R	Regular Spring	SR	SC Regular Flange	Z	Zirconia	AQ	Aqua
		E	External Shutter	S	Side Stable Spring	SN	No Flange			BG	Beige
				F	Snug-In Spring					BL	Blue
										GR	Green



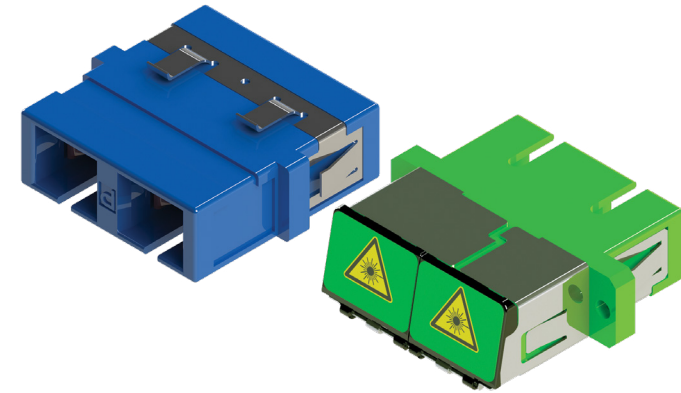
For the interactive product number table, [click here](#) or scan QRC

# SC Duplex Adapters

The compact design of SC Duplex Adapters is made to fit a single module space for single, multi-mode and APC applications. Fully compatible with SC Type products, the durable body design and high performance standards of SC Duplex Adapters are made available in a variety of model selections.

## Specs:

- Fiber Type: SM (9/125), MM (50/125, 62.5/125)
- Application Mode: SM, MM, APC
- Insertion Loss: 0.2dB or lower
- Return Loss: 55dB or more UPC, 65dB or more APC
- IEC-61754-4-SC-ED and TIA 604-3-B



SC Duplex Internal Shutter Adapters - Product Number Table

Series		Shutter Type		Spring Type		Housing Type		Sleeve Type		Housing Color	
SC2	SC Duplex Adapter	N	No Shutter	R	Regular Spring	SR	SC Regular Flange	Z	Zirconia	AQ	Aqua
		E	External Shutter	S	Side Stable Spring	SN	No Flange			BG	Beige
				F	Snug-In Spring					BL	Blue
										GR	Green



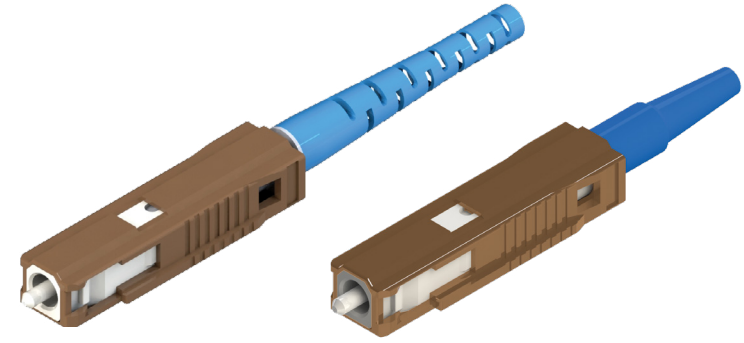
For the interactive product number table, [click here](#) or scan QRC

# MU Simplex Connector

MU Simplex Connectors are small form factor (SFF) connectors approximately half the size of standard SC Type Simplex Connectors. Perfect for back panel and other high-density applications, our MU Simplex Connectors are available with a zirconia split-sleeve.

## Specs:

- Fiber Type: SM (9/125), MM (50/125, 62.5/125)
- Application Mode: SM, MM, APC
- Insertion Loss: 0.3dB or lower
- Return Loss: 55dB or more UPC, 65dB or more APC
- IEC-61754-6-1997 and IEC-61755-3-2



MU Simplex Connectors - Product Number Table

Series	Mode	Product Type	Cable Spec	Housing Color	Ferrule Type & ID	Concentricity	Boot Type	Boot Color	Dust Cap Type	Shrink Tube Type											
MU	MU Connector	SS	Single Mode Simplex	P	Pre Assy	09	Φ 0.9mm Cable	BR	Brown	F50	125.0um	05	0.5um	RB	Rubber Boot (0.9mm Cable)	BL	Blue	T	T Dust Cap	N	No Tube
		MS	Multi Mode Simplex			20	Φ 2.0mm Cable			F55	125.5um (SM Standard)	10	1.0um (Standard)	BC	Bellcore Boot (2.0mm Cable)	VT	Violet				
										F60	126.0um	40	4.0um								



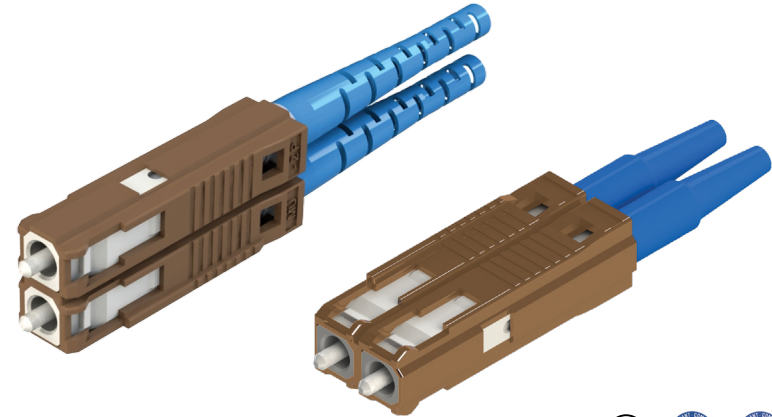
For the interactive product number table, [click here](#) or scan QRC

# MU Duplex Connector

Our MU Duplex Connectors are small form factor (SFF) connectors with uni-housing or duplex clip options. The MU Duplex Connectors accommodate a full range of specifications including side-by-side, horizontal, top-bottom, and vertical duplex types. Available with a zirconia split-sleeve.

## Specs:

- Fiber Type: SM (9/125), MM (50/125, 62.5/125)
- Application Mode: SM, MM, APC
- Insertion Loss: 0.3dB or lower
- Return Loss: 55dB or more UPC, 65dB or more APC
- IEC-61754-6-1997 and IEC-61755-3-2



MU Duplex Connectors - Product Number Table

Series	Mode	Product Type	Cable Spec	Housing Color	Ferrule Type & ID	Concentricity	Boot Type	Boot Color	Dust Cap Type	Shrink Tube Type											
MU	MU Connector	SD	Single Mode Duplex	P	Pre Assy	09	Φ 0.9mm Cable	BR	Brown	F50	125.0um	05	0.5um	RB	Rubber Boot (0.9mm Cable)	BL	Blue	T	T Dust Cap	N	No Tube
										F55	125.5um (SM Standard)	10	1.0um (Standard)	BC	Bellcore Boot (2.0mm Cable)	VT	Violet				
										F60	126.0um	40	4.0um								



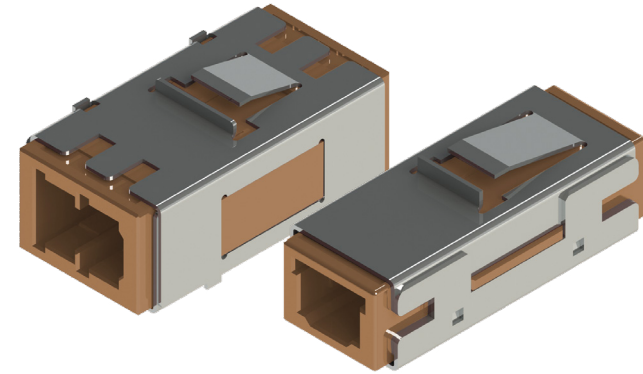
For the interactive product number table, [click here](#) or scan QRC

# MU Simplex & Duplex Adapters

MU Simplex and Duplex Adapters are small form factor (SFF) adapters with a flangeless body design and 4.5mm optical pitch, ideal for high-density mounting. The metal spring latches allow for easy placement into panels, and the zirconia split-sleeve ensures high-precision alignment.

## Specs:

- Fiber Type: SM (9/125), MM (50/125, 62.5/125)
- Application Mode: SM, MM, APC
- Insertion Loss: 0.2dB or lower
- Return Loss: 55dB or more UPC, 65dB or more APC
- IEC-61754-6-1997 and IEC-61755-3-2



MU Simplex & Duplex Adapters - Product Number Table

Series	Shutter Type	Spring Type	Housing Type	Sleeve Type	Housing Color
MU1 MU Simplex Adapter	N No Shutter	R Regular Spring	RP Receptacle	Z Zirconia	BR Brown
MU2 MU Duplex Adapter					



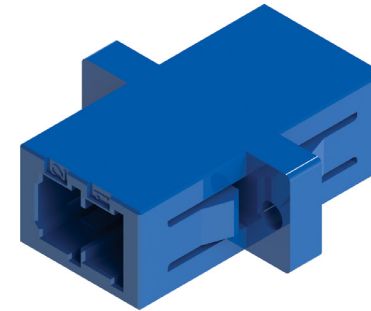
For the interactive product number table, [click here](#) or scan QRC

# MU Slimpack Duplex Adapters

MU Slimpack Adapters are small form factor (SFF) adapters featuring a traditional screw flange for secure mounting. With 4.5mm optical pitch, the MU Slimpack Adapters are the perfect solution for high-density mounting applications. They are available in a variety of housing colors and have a zirconia split-sleeve for high-precision alignment. The SC footprint allows for easy interchangeability, too.

## Specs:

- Fiber Type: SM (9/125), MM (50/125, 62.5/125)
- Application Mode: SM, MM, APC
- Insertion Loss: 0.2dB or lower
- Return Loss: 55dB or more UPC, 65dB or more APC
- IEC-61754-6-1997 and IEC-61755-3-2



MU Slimpack Duplex Adapters - Product Number Table

Series		Shutter Type		Spring Type		Housing Type		Sleeve Type		Housing Color	
MU2	MU Duplex Adapter	N	No Shutter	P	Plastic Spring	CR	Compact Receptacle	Z	Zirconia	AQ	Aqua
										BL	Blue
										GR	Green



For the interactive product number table, [click here](#) or scan QRC

# FC Simplex Connectors

FC Simplex Connectors provide a simple, screw-threaded coupling design for added reliability and connection strength. Accommodating 0.9mm, 2.0mm and 3.0mm boot connectors, FC Simplex Connectors are suitable for single, multi-mode and APC applications.

## Specs:

- Fiber Type: SM (9/125), MM (50/125, 62.5/125)
- Application Mode: SM, MM, APC
- Insertion Loss: 0.3dB or lower
- Return Loss: 55dB or lower UPC, 65dB or lower APC
- IEC-61755-3-2 and IEC 61754-13



**FC Simplex Connectors - Product Number Table**

Series		Mode		Product Type		Cable Spec		Housing Color		Ferrule Type & ID		Concentricity		Boot Type		Boot Color		Dust Cap Type		Shrink Tube Type		
FC0	FC Connector (Key 2+0/-0.15)	SM	Single Mode Simplex	P	Pre Assy	09	Φ 0.9mm Cable	NO	Metal	P50	Pre Radius 125.0um	05	0.5um	BC	2.0mm/3.0mm	AQ	Aqua	T	T Dust Cap	N	No Tube (0.9mm only)	
		MS	Multi Mode Simplex			20	Φ 2.0mm Cable			P55	Pre Radius 125.5um	10	1.0um		RB	0.9mm	BG			Beige	W	White
		AS	APC Simplex			30	Φ 3.0mm Cable			P60	Pre Radius 126.0um	40	4.0um				BL			Blue	Y	Yellow
						S50	Step 125.0um (APC)					GR	Green									
						C50	Conical 125.0um (APC)					HV	Heather Violet									
												WH	White									

**FC Bendi Boot Connectors - Product Number Table**

Series		Mode		Product Type		Cable Spec		Housing Color		Ferrule Type & ID		Concentricity		Boot Type		Boot Color		Dust Cap Type		Shrink Tube Type	
FC0	FC Connector (Key 2+0/-0.15)	SM	Single Mode Simplex	P	Pre Assy	20	Φ 2.0mm Cable	NO	Metal	P50	Pre Radius 125.0um	05	0.5um	BB	Bendi Boot	WH	White	T	T Dust Cap	N	No Tube (3.0mm only)
		MS	Multi Mode Simplex			30	Φ 3.0mm Cable			P55	Pre Radius 125.5um	10	1.0um				W			White	
		AS	APC Simplex							P60	Pre Radius 126.0um	40	4.0um				Y			Yellow	
						S50	Step 125.0um (APC)														
						C50	Conical 125.0um (APC)														

# FC Simplex Adapter

Our FC Simplex Adapter is a durable-metal construction providing a fast, precise and quality connection. They are used for single, multi-mode or APC applications.

## Specs:

- Fiber Type: SM (9/125), MM (50/125, 62.5/125)
- Application Mode: SM, MM, APC
- Insertion Loss: 0.3dB or lower
- Return Loss: 55dB or lower UPC, 65dB or lower APC
- IEC-61754-13



FC Simplex Adapter - Product Number Table

	Series	Duct Type		SleeveType		Housing Color	
FC1SN	FC Adapter 1 Core (Simplex)	SD	Single Cut	Z	Zirconia	NO	Metal

# ST Simplex Connectors

Our reliable ST Simplex Connectors feature a quick release bayonet-style mount and a long, cylindrical 2.5mm ceramic ferrule allowing for easy insertion and removal. These spring-loaded connectors maintain a stable connection for use with both short- and long-line systems.

## Specs:

- Fiber Type: SM (9/125), MM (50/125, 62.5/125)
- Application Mode: SM, MM, APC
- Insertion Loss: 0.3dB or lower
- Return Loss: 55dB or lower UPC, 65dB or lower APC
- IEC-60874-10-1, IEC-61755-3-1 and TIA-EIA-604-2



ST Simplex Connectors - Product Number Table

Series		Mode		Product Type		Cable Spec		Housing Color		Ferrule Type & ID		Concentricity		Boot Type		Boot Color		Dust Cap Type		Shrink Tube Type			
ST	ST Connector	SS	Single Mode Simplex	P	Pre Assy	09	Φ 0.9mm Cable	NO	Metal	P50	Pre Radius 125.0um	05	0.5um	BC	Bellcore Boot (2.0/3.0mm)	BG	Beige	T	T Dust Cap	N	No Tube (0.9/3.0mm only)		
		MS	Multi Mode Simplex			20	Φ 2.0mm Cable			P55	Pre Radius 125.5um			10	1.0um	MB	Middle Boot (2.0/3.0mm)			BL	Blue	W	White
		AS	APC Simplex			30	Φ 3.0mm Cable			P60	Pre Radius 126.0um			40	4.0um	RB	Rubber Boot (0.9mm)			BK	Black	Y	Yellow
				S50	Step 125.0um (APC)					SB	Short Boot (0.9/2.0mm)	GR	Green										
				C50	Conical 125.0um (APC)							WH	White										

ST Bendi Boot Connectors - Product Number Table

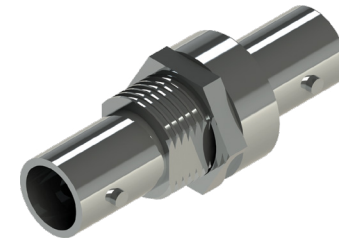
Series		Mode		Product Type		Cable Spec		Housing Color		Ferrule Type & ID		Concentricity		Boot Type		Boot Color		Dust Cap Type		Shrink Tube Type			
ST	ST Connector	SS	Single Mode Simplex	P	Pre Assy	20	Φ 2.0mm Cable	NO	Metal	P50	Pre Radius 125.0um	05	0.5um	BB	Bendi Boot	BG	Beige	T	T Dust Cap	N	No Tube (3.0mm only)		
		MS	Multi Mode Simplex			30	Φ 3.0mm Cable			P55	Pre Radius 125.5um			10	1.0um					BL	Blue	W	White
		AS	APC Simplex							P60	Pre Radius 126.0um			40	4.0um					BK	Black	Y	Yellow
				S50	Step 125.0um (APC)							GR	Green										
				C50	Conical 125.0um (APC)							WH	White										

# ST Simplex Adapter

Our precision-molded ST Simplex Adapters minimize loss and are a dependable solution for multi-mode ST fiber assemblies. They are designed to offer superior precision alignment and added longevity for compatible ST-type connectors.

## Specs:

- Fiber Type: SM (9/125), MM (50/125, 62.5/125)
- Application Mode: SM, MM, APC
- Insertion Loss: 0.2dB or lower
- Return Loss: 55dB or lower UPC, 65dB or lower APC
- IEC-61754-2-1996-ST



ST Simplex Adapter - Product Number Table

Series		Sleeve Type		Housing Color	
ST1SN	ST Adapter 1 Core (Simplex)	Z	Zirconia	NO	Metal

The image features a solid dark blue background. On the left side, there are several overlapping, curved shapes in lighter shades of blue and a small, solid purple circle. The word "TOOLS" is written in a bold, white, sans-serif font, positioned to the right of the purple circle and partially overlapping the lighter blue shapes.

**TOOLS**

# CleanClicker™ 600

Suncall America is now an official distributor of Sticklers™ Cleaning Products. Whether it's a new installation, repair or a maintenance check keep all connections clean and performing at top speeds with Sticklers products.

## CleanClicker™ 600 MPO Connector Cleaner & MPO Adapter Set

This unique MPO cleaning tool is ideal for high-density network applications such as in data centers, telco central offices and cable TV head ends.

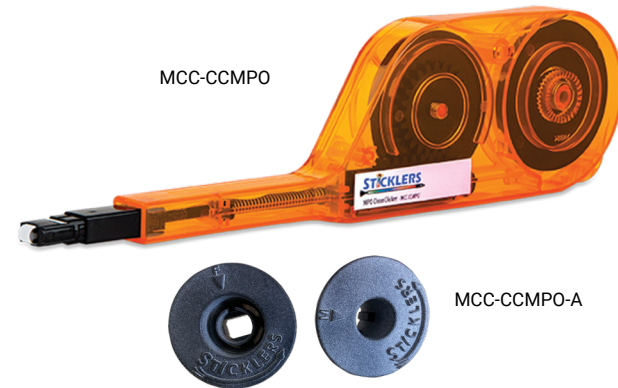
- 'Keyless' cleaning tip allows up or down insertion
- 600+ cleanings in each tool
- Cleans both male and female MPO connectors
- Translucent plastic housing shows the tech how much cleaning ribbon remains
- The MPO connector cleaner adapter set allows the Connector Cleaner to work on hardened connectors. These include the Commscope HMF0C and the Corning Optitip. Each adapter is keyed for one way insertion and perfect alignment.

### CleanClicker 600 MPO Connector Cleaner:

Part Number: MCC-CCMPO

### MPO Adapter Set:

Part Number: MCC-CCMPO-A



For the interactive product number table, [click here](#) or scan QRC

# CleanClicker™ 750 – 1.25mm

Suncall America is now an official distributor of Sticklers™ Cleaning Products. Whether it's a new installation, repair or a maintenance check keep all connections clean and performing at top speeds with Sticklers products.

## CleanClicker™ 750 1.25mm Fiber Optic Connector Cleaner & Refill Cartridge

This click-to-clean tool is for use on LC/UPC, LC/APC, MU/UPC, MU/APC connectors. It also cleans most ferrule stub and lens-based SPF+ transceivers, both in and out of adapters.

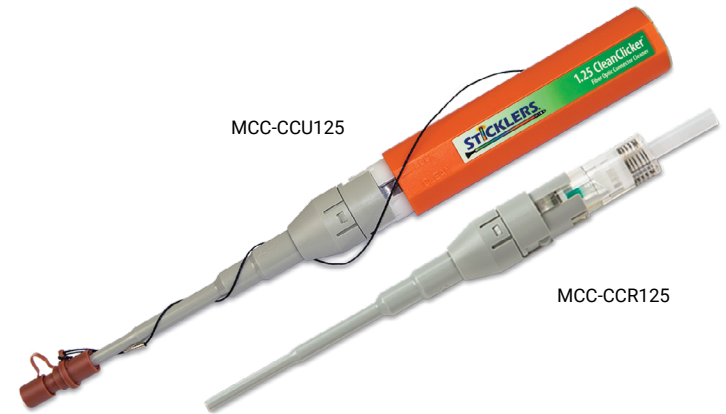
- 750+ speedy cleans in each tool
- High purity cleaning strand removes dust, particulate and oil contamination
- Pen-style tool cleans 90% of all connectors with just a single click instead of 2-4 clicks
- Gentle activation will not damage end-faces during cleaning
- Long throw, so more cleaning ribbon is used on every activation for better cleaning with every click
- Long barrel length to fit inside high fiber-count panels without disrupting the adjacent connectors
- Refill cartridges perform 750+ cleanings, with a 30% savings over the cost of a new cleaner

### CleanClicker 750 1.25mm Fiber Optic Connector Cleaner:

Part Number: MCC-CCU125

### 1.25mm Refill Cartridge:

Part Number: MCC-CCR125



For the interactive product number table, [click here](#) or scan QRC

# CleanClicker™ 750 – 2.5mm

Suncall America is now an official distributor of Sticklers™ Cleaning Products. Whether it's a new installation, repair or a maintenance check keep all connections clean and performing at top speeds with Sticklers products.

## CleanClicker™ 750 2.5mm Fiber Optic Connector Cleaner & Refill Cartridge

The CleanClicker 2.5mm tool cleans SC/UPC, SC/APC, ST, FC/APC, FC/UPC, E2000/UPC and E2000/APC connectors. It also cleans some hardened 2.5mm connectors.

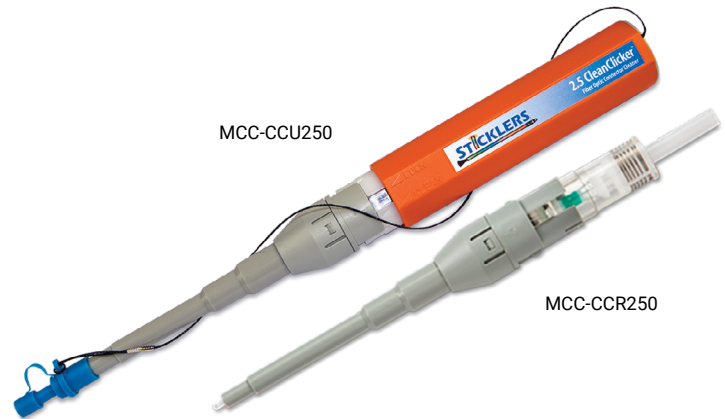
- 750+ speedy cleans in each tool
- High purity cleaning strand removes dust, particulate and oil contamination
- Pen-style tool cleans 90% of all connectors with just a single click instead of 2-4 clicks
- Gentle activation will not damage end-faces during cleaning
- Long throw, so more cleaning ribbon is used on every activation for better cleaning with every click
- Long barrel length to fit inside high fiber-count panels without disrupting the adjacent connectors
- Refill cartridges perform 750+ cleanings, with a 30% savings over the cost of a new cleaner

## CleanClicker 750 2.5mm Fiber Optic Connector Cleaner:

Part Number: MCC-CCU250

## 2.5mm Refill Cartridge:

Part Number: MCC-CCR250



For the interactive product number table, [click here](#) or scan QRC

# CleanClicker™ Cassette Cleaners

Suncall America is now an official distributor of Sticklers™ Cleaning Products. Whether it's a new installation, repair or a maintenance check keep all connections clean and performing at top speeds with Sticklers products.

## CleanClicker™ Cassette Cleaners for Fiber Optics – MPO & MT Cassettes

The CleanClicker Cassette Cleaner cleans SC, LC Duplex, ST, FC, E2000, female (no guide pins) MPO cable assemblies and the MT version cleans male (with guide pins) MT ferrules. It can be used on glass, ceramic and composite ferrule faces. It's ideal for OSP and premises applications, enterprise applications, field installations, OEM assembly and in research labs.

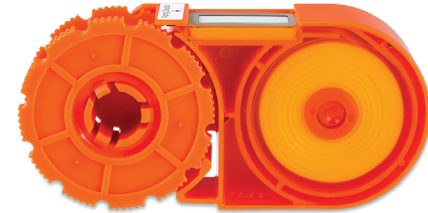
- Cleans multiple end-faces before advancing the wipe, saving 50% to 80%
- Micro-woven cleaning ribbon traps dust, dirt, oil and grease
- Non-refillable tools have 400+ cleanings per tool (approx. 12.5 meters or 40 feet)
- Translucent housing makes it easy to see the remaining quantity of cleaning ribbon
- Ribbon advances without bunching up
- In Part Number MCC-CCWMT, the backing in the cleaning window is cut to accept the guide pins so the fiber array is being wiped effectively by the cleaning ribbon

## CleanClicker Cassette Cleaners for Fiber Optics – MPO Cassette:

Part Number: MCC-CCWRC

## CleanClicker Cassette Cleaners for Fiber Optics – MT Cassette:

Part Number: MCC-CCWMT



For the interactive product number table, [click here](#) or scan QRC

# Crimping Tool

Designed to crimp LC, SC and MPO Type 2.0mm/3.0mm fiber connections, the Crimp Tool by Suncall America lessens the workload by requiring 25% less handle force than traditional crimp tools. The Crimp Tool includes a recessed ratchet release and offers a ratcheted design to allow for easy change of grip.

## Crimping Tool:

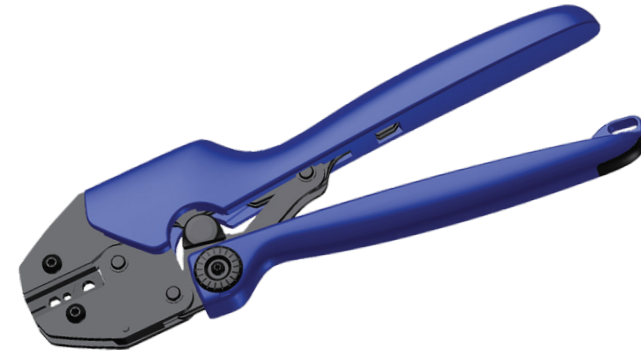
LC Product Number: SAI-CT-3K

MPO Product Number: SAI-CT-MPO-3

## Replace Die for the Suncall Crimping Tool:

LC Product Number: SAI-CT-3K-DIE-SET

MPO Product Number: SAI-CT-MPO-3-DIE-SET



For the interactive product number table, [click here](#) or scan QRC



## Suncall America is ready. Let's connect the world together.

Suncall America's dedication to superior engineering, detailed problem solving and exceptional customer service is demonstrated in all aspects of the company.

We are ready to assist you with all your fiber optic interconnect needs.

For more information, please visit our website at [SuncallAmerica.com](http://SuncallAmerica.com) or call us at 469.445.1131 or 864.329.1130.







Dallas, TX  
P 469.445.1131

Greenville, SC  
P 864.329.1130

SuncallAmerica.com  
sales@suncallamerica.com

