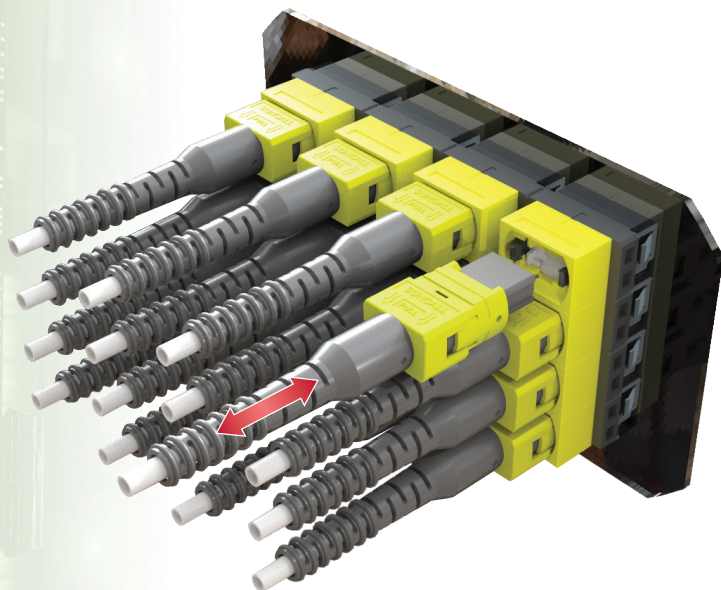


# MPO | 12F Pull Boot Connector

DESIGNED FOR HD PACKAGING • EASY PUSH-PULL DESIGN



- EASY PUSH-PULL INSTALLATION
- SHORT BOOT NOW AVAILABLE



### Features:

- Designed specifically for high-density packaging
- Easy connect and disconnect
- Improves cable management
- Reinforced push-pull boot eliminates the need for a tab
- Available in 3.0mm
- Select from 2 boot options
- Available in a variety of housing colors
- Built to MPO standards: IEC-61754-7 & TIA-604-5-D

Housing Color Variety:



	SM STANDARD	SM LOW LOSS	MM STANDARD	MM LOW LOSS
Insertion Loss	0.70dB Max	0.35dB Max	0.50dB Max	0.35dB Max
Return Loss	60dB(8°Polish)		20dB(Flat Polish)	
Operating Temperature	-40 to +75°C			
Housing Color	Green	Yellow	Beige/Black	Aqua/Heather Violet
Fiber Type	OS1/OS2	OS1/OS2	OM1/OM2	OM3/OM4/OM4+



UL94V-0



Scan the code for more details